

40, 75, 100, 120, 150, 200, 240, 300 WATT
AREA LIGHT SYSTEM



MODERN SEAGULL-CURVE DESIGN
UNIFORM LIGHT (AMBER, 3K, 4K, 5K)
FIELD SERVICEABLE
HIGH END COMPONENTS
THERMALLY PROVEN



A great light module with excellent thermal management and 4-part stacks of 3030 Lumiled LEDs for each, large and efficient optics. All units are stocked to accept a photocell and motion controls. Built in Alpharetta, GA with local customization to meet any specification, the NightShine Mighty is an excellent area light or flood light.

- *Rugged and simple “one-person install” system*
- *Excellent maintenance and USA warranty support*
- *Highly serviceable*
- *Built on-demand to your specification*



TYPE IV STANDARD FOR LIMITED BACKLIGHT AND FORWARD THROW.
OPTICAL CHOICES
BREATHING VALVE FOR HEAT PRESSURE RELEASE.
RELIABLE AND UNIVERSAL



PERFORMANCE

PRODUCT	WATTAGE	REPLACES	LUMENS, 5000K*	VOLTAGE	CRI	OP TEMP
HLAR03	40	100W-250W	5,800	100-277V, 270-480V	74+	-40°C +55°C
	75	250W-350W	10,500			
	100	250W-400W	14,100			
	120	250W-400W	16,560			
	150	400W	20,250			
	200	400W-600W	28,200			
	240	750W-1000W	33,400			
	300	1000W	41,500			

* 5000K LUMEN OUTPUT TIMES 0.97 FACTOR FOR 4000K

* 5000K LUMEN OUTPUT TIME 0.94 FACTOR FOR 3000K

T_{2/3/4/5} OPTICAL DISTRIBUTION
 PHOTOMETRIC SERVICES AVAILABLE

ORDERING

EXAMPLE **HLAR03-120-U-40K-4-B-SF**: 120 watt unit, 120-277V at 4000K, with T4 optics and slip fitter mount

SKU	WATTAGE	VOLTAGE	CCT	OPTICS	FIXTURE COLOR	MOUNTING	CONTROLS	SHIELD
HLAR03	40	U (120-277) H (277-480)	50K 5000K	2 T2	D Dark Bronze**	S/RP Pole Mount (square or round)	N None P Photocell P2 Smart Photocell	SH1 House side SH2 4-side drop
	75		40K 4000K	3 T3	B Black			
	100		30K 3000K	4 T4	W White*	TRU Trunnion	M Motion C Surge	
	120		Amber*	5 T5	Other	SF Slip Fitter		
	150							
	200							
	240							
	300							

* Available with consultation

** Primary stock

HiLUMZ USA

1335 Ridgeland Parkway
 Suite 150
 Alpharetta, GA 30004

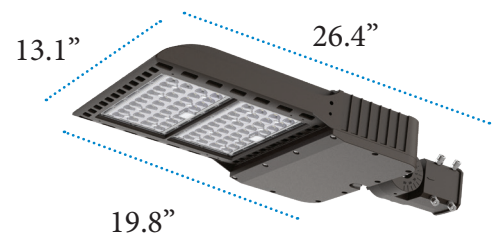
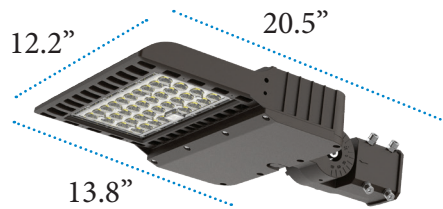
sales@hilumzusa.com
 678-867-9200
 HiLumzPRO.com

BUILD YOUR FIXTURE

1. SELECT OUTPUT FROM 5,800 TO 41,500 LUMENS

Weight - 40 to 150 Watt	
Light System	11.5 lbs
/including mount	13.7 lbs
EPA	
Single Head	0.36
Dual Head	0.72
Tri-Head	0.98

Weight - 200 to 300 Watt	
Light System	20.0 lbs
/including mount	21.1 lbs
EPA	
Single Head	0.48
Dual Head	0.96
Tri-Head	1.44

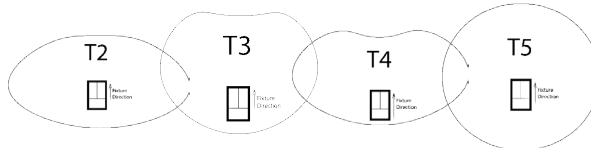


2. SELECT FEATURES

INPUT VOLTAGE

120-277VAC
480VAC

OPTIC

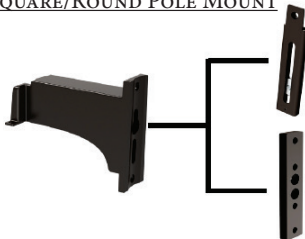


CCT/COLOR

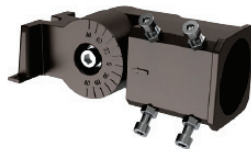


3. SELECT A MOUNT

SQUARE/ROUND POLE MOUNT



SLIP FITTER

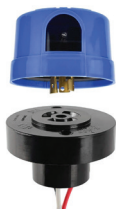


TRUNNION



4. SELECT CONTROLS

PHOTOCELL



MOTION/PIR



SURGE PROTECTION



SH1 HOUSE SHIELD

