

MARKET LEADING PERFORMANCE

HIGHEST QUALITY COMPONENTS

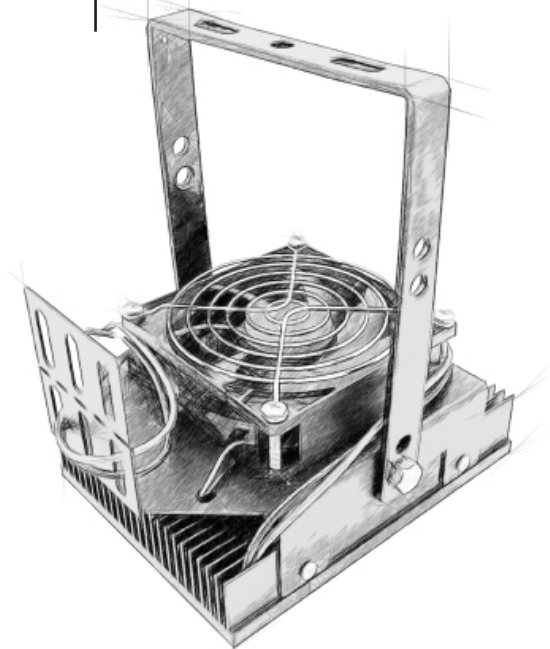
EXCELLENT HEAT MANAGEMENT

PLUG & PLAY KITS

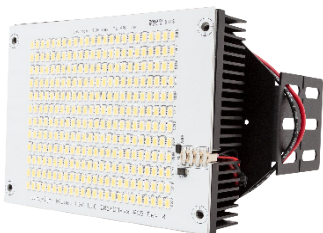
CUSTOM INSTALL SYSTEMS

FULL RANGE OF OPTICS

THE PROFESSIONAL'S CHOICE



## DELIVERING EXCELLENT LIGHT TO EVERY STATE IN THE UNITED STATES OF AMERICA



### DM Light Engine

- 288 Samsung LM561C midpower LED's powered under 150 mA.
- Custom extruded aluminum heat sink.



### DMZ Light Engine

- 32 Seoul hipower LED's
- powered at ~700mA



### Meanwell HLG Driver Series

- 120-277 or 480 VAC
- 0-10V Dim to Off - Potted
- Industry Leading Quality

## APPLICATIONS

- |                      |                               |
|----------------------|-------------------------------|
| • SHOEBOX FIXTURES   | • STREETLIGHTS                |
| • CAR DEALERSHIPS    | • BELL HOUSING                |
| • BELL STREET LIGHTS | • CYLINDER SHOEBOX            |
| • TUNNEL LIGHTS      | • WAREHOUSE/GYMNASIUM         |
| • FLOOD LIGHTS       | • HIGH OUTPUT 2X2             |
| • SIGN LIGHTERS      | • INDOOR TENNIS COURT UPLIGHT |

### ANY INSTALLATION

175 WATT TO 1000 WATT

### REPLACEMENT

## PERFORMANCE SPECIFICATIONS

Product	Size	Tested Input Wattage	Replaces	Delivered Lumens	Optics	Typical Height	CRI
DM60	Single Head	57	200 - 250 Watts	8,820	N/A	15-25 ft	80+
DM80		76	250 - 300 Watts	11,500	N/A	15-25 ft	
DM100		96	250-400 Watts	13,100	N/A	18-30 ft	
DM120		116	300 - 400 Watts	18,390	N/A	20-30 ft	
DM150		149	400 - 500 Watts	22,800	N/A	25-35 ft	
DM240	Dual Head	232	600 - 1000 Watts	36,600	N/A	30-40 ft	
DM300		284	1000-1200 Watts	45,600	N/A	35-50 ft	
DMZ150	Single	139	300 - 400 Watts	15,200	T3, T5	25-35 ft	70+
DMZ300	Dual	278	750 - 1000 Watts	30,400	T3, T5	35-50 ft	

DMZ Light Unit available with a full range of optics

See separate specification sheet for 30/50  
Watt DC units, Wall Pack Cartridge, and  
custom application specific solutions

Product	Length	Width	Height
Driver	9.0"	2.7"	1.5"
Single Head	6.0"	4.5"	3.0"
Dual Head	6.0"	10.0"	3.0"

Each light engine weights 2.4 lbs

## ORDERING

EXAMPLE **DM150-5080-1N-V**: 150 Watt unit at 5000K with 120-277V dimmable driver and vertical FlexMount kit

Product	Color / CRI	Driver	Mounting	Optics
DM DM60 DM80 DM120 DM150 DM240 DM300  DMZ DMZ150 DMZ300	DM 5080 4080 3080  DMZ 5070 4070 2770	1N = 120-277v 1D = 120-277v dim 2N = 480v 2D = 480v dim	<u>SOCKET MOUNT</u> V = Socket FlexMount for Vertical or Horizontal Socket VS = Vertical Mount E39 Screw In  AD = Glass Adhesive Mount  <u>STANDARD PLATES</u> FR = Plate Round FS = Plate Square QB = Quickbracket Add "D" to have driver mounted to plate (example, FSD)  CSTM = Custom (request quote)	Blank (none)  <u>DMZ Only</u> T3 T5 25° 78°  IP - Requires IP Protection*  Surge  Blank (none) S277 = 120v-277v 10kV S480 = 480v 10kV

### MOUNTING

#### SOCKET MOUNT

*H = FlexMount, Horizontal Facing Socket*

*V = FlexMount, Vertical Facing Socket*



**F**lexMount system utilizes a bracket and hose clamp to securely attach to any E26 or E39 socket. The clamp offers incredible strength while avoiding the faulty and low cost metal of screw-in alternatives. It's a professional solution designed to last and provide mounting flexibility.

#### AD = ADHESIVE MOUNT



**A**dhesive attachment installs directly on the existing fixture lens using a 3M, high heat adhesive tape. The simple install is great for any application, including upward or side facing as the adhesive strength is rated for 5x the weight of a DM light engine.

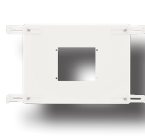
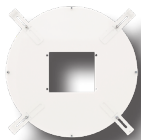
*VS = Vertical Mount E39 Screw In*



**F**or the fastest install in high bay application, HiLumz recommends the E39 socket screw in mount. The driver is mounted externally in the ballast box and direct wired to the light head.

#### PLATE MOUNT

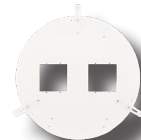
*Single Head Plates*



Single Head Round (FR)  
14.5" Plate Diameter  
Extends from 14.75" to 21.5"

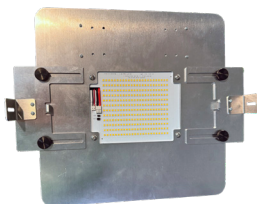
Single Head Square (FS)  
10.5" x 14.5"  
Extends from 14.5" to 21.5"

*Dual Head Plates*

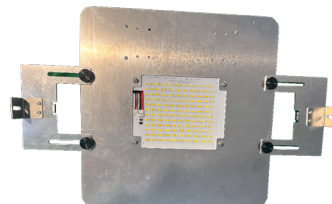


Dual Head Round (FR)  
20.25" Plate Diameter  
Extends from 20.25" to 26.5"

Dual Head Square (FS)  
13.5" x 19.5"  
Extends from 19.5" to 26.5"



14.5" extension



18.75" extension maximum

Single Head QuickBracket (QB)  
14.5" minimum extension  
18.75" maximum extension

One kit is optional for Adhesive or Screw in Attachment to sidewall.

Ask about Fixture Specific brackets/plates & Control Integration