



The Professional's LED Choice



## SOLUTIONS GUIDE

2023 v4.3

678-867-9200

[sales@hylumzusa.com](mailto:sales@hylumzusa.com)

[hylumzusa.com](http://hylumzusa.com)



HiLumz install images



# HILUMZ USA | LIGHT FIXTURE RECONDITIONING

## YOUR LED SHOP

We design, build and service high quality LED lighting in our UL certified facility in Alpharetta, GA.

WE GO BEYOND RETROFIT KITS. RATHER WE ENABLE FIELD TECHNICIANS TO CONVERT TRADITIONAL LUMINARIES TO NEW LED LUMINARIES, IN THE FIELD!

- ➔ *Engineered product portfolio for JIT production.*
- ➔ *Consultative problem solving approach*
- ➔ *LED product application & control expertise.*
- ➔ *"Easy to do business" culture*



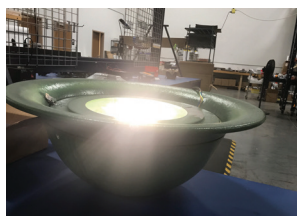
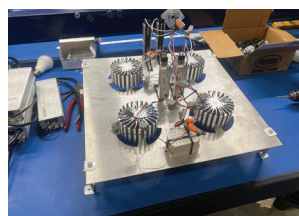
## Field Conversion Kits

Page 4	DM(Z) High Output Conversion Kits
Page 5	IP Rated & Specialty High Output Conversion Kits
Page 6	Mid Output Conversion Kits
Page 7	Wall Pack Cartridge
Page 8	Post Top Pearl Decorative Fixtures Conversion Kits
Page 9	Tough Bar All Purpose Conversion Kits
Page 10	DynaStrip High Output Linear Conversion Kits
Page 11	RipStrip Magnetic Output Linear Conversion Kits
Page 12	High Output Can Downlight Kits
Page 13	Other Speciality Interior Conversion Kits

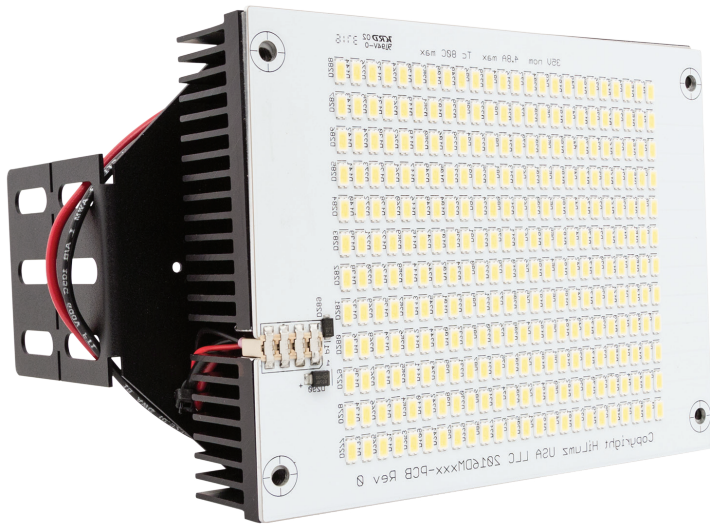
## Fixtures

Page 14	NightShine Mini+ Standard Shoebox Fixture
Page 15	NightShine Grand High Mast / Tennis Fixture
Page 16	Decorative Wall Washer
Page 17	Hatch Canopy Solar Light
Page 18	Customer Solution Process
Page 19	Infrastructure White Paper

## ENJOY OUR SOLUTIONS!



## OVERVIEW

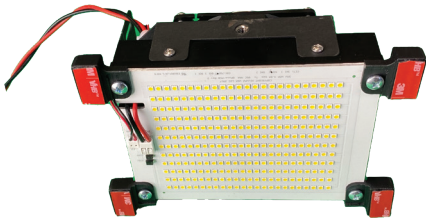


### 250 TO 1,000 WATT REPLACEMENTS 10+ YEARS EXPERIENCE MOST TRUSTED IN INDUSTRY

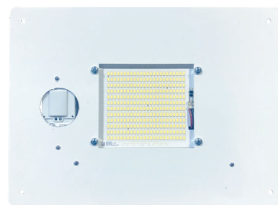
HiLumz continues to be the go-to solutions provider for high output retrofit systems. Designed to replace 250W to 1000W traditional lamps. Samsung 3030 LEDs

## FEATURES

- Excellence in mounting/aesthetics
- 120 to 480VAC input
- 0-10V dimming / Dali
- T3, T5, Narrowing Optics
- 3,000 to 40,000 lumens
- Amber, 27k, 30k, 35k, 40k, 50k



**Adhesive Mount**  
Universal Fit



**Plate Mount**  
Rectangle/Round/Custom



**Socket Mount**  
Horizontal or Vertical

## ORDERING

EXAMPLE **DM150-5080-1N-V**: 150 Watt unit at 5000K with 120-277V dimmable driver and vertical FlexMount kit

Product	Color / CRI	Driver	Mounting	Optics
DM	DM	1N = non-Dim 120-277v	SOCKET MOUNT	Blank (none)
DM60	5080	1D = 1-10v Dim 120-277v	H = FlexMount, Horizontal Socket	DMZ Only
DM80	4080	2N = 480v single head	V = FlexMount, Vertical Socket	T3
DM120	3080	2N = 480v dual head	VS = Vertical Mount E39 Screw In	T5
DM150	Amber		AD = Glass Adhesive Mount	25°
DM240				78°
DM300	DMZ		SINGLE HEAD PLATES	Surge
DMZ	5070		FR = Plate Round	Blank (none)
DMZ150	4070		FS = Plate Rectangle	S277 = 120v-277v 10kV
DMZ300	2770		FRD = Plate Round w/ Driver Mount	S480 = 480v 10kV
			FSD = Plate Square w/ Driver Mount	
			CSTM = Custom	





## IP67 WATERPROOF LIGHT MODULES

- Replace existing lens with LED system
- Does not need to be behind glass
- Allows for refurbishing existing LED systems
- Extremely tough with full range of optics



## INDIRECT HIGH OUTPUT

- Natatoriums / Indoor Tennis
- Replacement for 1,000 Watt HID



## TENNIS LIGHT CONVERSION KIT

- Only tennis LED conversion kit on the market to deliver light performance at USTA standards
- As cost effective as a bulb & ballast replacement with benefits of LED

## OVERVIEW



**Garage Canopy, Post Top, Wall Sconces, Bollards, Down-lights, Street Lights, Inground**

**30W- over 4,000 lumens**

**50W - over 6,500 lumens**

Small, powerful LED system that packs a punch. With vast beam control options, line or low voltage dimming, and



## FEATURES

- TRIAC Line Dimming
- 0-10V dimming
- HiLumz mounting expertise
- Full suite of LEDil optics
- Canopies, Streetlights, Wall Systems, Decorative

## OPTICS

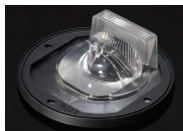
T3

Roadways, Post Tops for medium directional



T4

Roadways, Post Tops for wide directional



T5

All directional, wide area lighting



Zorya Bulb

340° bulb effect for all directional light



## ORDERING

**EXAMPLE DC30-4080-F2-T3:** 30 watt unit at 4000K, 80 CRI with FlexMount e39 clamp & T3 optic

Product	Color	CRI	Mounting	Optics	Surge
DC30 DC50	50 = 5000K 40 = 4000K 35 = 3500K 27 = 2700K 22 = 2200K	80 90* * Special order	V2 = E26 Vertical Screw In V3 = E39 Vertical Screw In H2 = Custom Bracket Mount H3 = Custom Plate Mount F2 = E26 FlexMount Clamp (non-screw in) F3 = E39 FlexMount Clamp (non-screw in) FP = Floating Post Top  * All solutions external driver	N = None (125°) T3 = T4 T4 = T4 T5 = T5 Z = Zorya Bulb	Blank = None SP27 = 120-277V 10kV SP48 = 480V 10kV





## OVERVIEW

**30W- REPLACE 150 TO 175W**  
**60W - REPLACE 250W**

Never struggle with replacing wall packs again. Long lasting, plug & play installation to turn any medium or large wall pack to a high power LED system.

## FEATURES

- 160+ Lumens/Watt out of fixture
- 0-10V dimming
- <10 minute install versus >25 minutes to replace fixture
- 3000K, 4000K, 5000K
- Excellent thermals

## ORDERING

EXAMPLE **DWP-60-5080-1N-HP-N**: 40 watt wall pack cartridge unit at 5000K, 80 CRI, 120-277VAC input

Product	Wattage	Color	CRI	Voltage	Mounting
DWP	30 60	50 = 5000K 40 = 4000K 30 = 3000K	80	1N = 120-277V 2N = 480V	HP - Hinge Plate



## OVERVIEW

### 4,000 to 15,000 Lumen System Decorative & Industrial Indoor/Outdoor Application

Integrated, serviceable, customizable, and tough LED light system for a variety of post top, garage, street light, and decorative lantern style fixtures. Easily customizable installation bases, downward angled light engines to optimize surface foot

candles and a serviceable and separate driver system to maximize operating life.



BOTTOM UP MOUNT

TOP DOWN MOUNT

## FEATURES

- Socket mount or direct mount
- Experienced conversion kits for all major brands
- 0-10V dimming / Dali
- HiLumz mounting expertise
- House-Side / Street-Side directional
- 3,000 to 14,000 lumens
- Amber, 22k, 27k, 30k, 35k, 40k, 50k



## ORDERING

EXAMPLE **HLPTK-50-U-40K-SM-T-PT1-SP:** 50 watt unit at 4000K, 80 CRI with Bottom Up Plate Mount, 360°, 10kV Surge

Product	Wattage	Input Voltage	Color/CCT	Directional Lighting	Light Angle
HLPTK	30 50 60 90 120	U = 100-277VAC H = 480VAC	50K = 5000K 40K = 4000K 35K = 3500K 30K = 3000K 27K = 2700K 22K = 2200K AM = Amber	SM = Symmetric (360°) ASM = Asymmetric (180°)	S = Straight T = Downward Tilt
				Mounting	Controls
				PT1 = Bottom Up Plate BE26 = Bottom Up E26 BE39 = Bottom Up E39 PT2 = Top Down Plate TE26 = Top Down E26 TE39 = Top Down E39 9XXXX = 5-digit Custom Mount CSTM = Custom (contact HiLumz)	PC3 = 3-Pin Photocell PC7 = 7-Pin Photocell D = Dali Enabled PC7D = 7-Pin + Dali
				Surge	
				SP10 = 10kV Surge SP20 = 20kV Surge	



## OVERVIEW

## IP 54

## 820 to 5600 Lumen Packages

## Separated or Integrated 120V-277V Driver

The Tough Bar low power LED module is a fantastic fit for any application requiring high quality light and long life in tough and tight conditions.

## FEATURES

- Excellent light module adaptable to hundreds of applications using HiLumz customized mounting solutions.
- Multiple modules available in a single application
- >Ra80
- Flicker-free, hum-free, buzz-free
- 110° beam pattern
- Rated at -25°C to 85°C
- IP54 Light Module with IP66 wire connections & driver system
- Protective covering to prevent dust and physical damage to LED module

## RETROFITTING

- Wall Sconces
- Bollards
- Decorative
- Step Lighting
- Exterior Accent Lighting
- Docks/Marinas
- Endless Applications



## ORDERING

EXAMPLE **TB-12-3080-A-RA**: 12 Watt Tough Bar Module at 3000K with remote driver and adhesive back

Product	Wattage	Color/CRI	Voltage	Mounting
TB02	6	Amber	A (120-270V)	RB - Remote driver; bracket attachment RA - Remote driver; adhesive attachment IB - Integrated driver; bracket attachment IA - Integrated driver; adhesive attachment  Standard unit is screw attached. We also provide adhesive and magnet attachment options. Please contact a HiLumz sales associate to discuss.
	12	2280		
	20	2780		
	25*	3080		
	40*	3580		
	60**	4080		
		5080		

\* Two light bar configuration

\*\* Three light bar configuration



**RETROFITTING**

- Low Bay / High Bay
- Accent Lighting
- Wall Washing
- High Ceiling Troffers (car dealerships)
- Slot Fixtures
- High Output T5 Retro
- Vapor Tights / Tunnels / Parking Garages
- High output troffers



**OVERVIEW**

**12,000 LUMENS FROM SINGLE 4' STRIP**  
**OVER 175+ LUMENS / WATT DELIVERED**  
**EASY PLUG & PLAY ATTACHMENTS**  
**OPTIONAL DAMP CHANNEL**  
**INTEGRATED HEAT SINK**

With integrated heatsink and high output metal core LED board, the Dynastrip is designed for excellent heat management with the industry's highest lumen output.

**FEATURES**

- Operating Temperature: -40° F to 135° F (57° C)
- Flicker-free, hum-free, buzz-free
- 175+ (up to 190) Lumens/Watt via under-driven Lumiled 2835C SMDs
- Programmable from 9 to 190 Watts
- L70 over 120,000 hours
- Integrated wireless or wired controls
- 3000K to 5000K; color changing systems available
- 0-10v constant curve; Triac (line voltage) available with select wattages
- Daisy chained boards installed bumper to bumper or in 2x4/8 grid
- Designed for install & service ease
- Plug & play TEK-screw-in kits
- Available with DC power converter for DC powered facilities

**ORDERING**

**EXAMPLE HDS-88-120-5070-S:** Two, four-foot strips at 5000K, 70+CRI, powered at 120 Watts in standard channel

PRODUCT	LENGTH	WATTAGE	COLOR/CRI	MOUNT
HDS	2x22 = 2 feet 1x44 = 4 feet 2x44 = 8 feet (two 44's) 4x44 = 16 feet (four 44's) "XX" = custom	60 80 100 120 150 180 200	3080 4080 5080 CC = CCT Tuning*	S (Standard open LEDs in heat sink channel) C (IP65 enclosed channel)

\* Call HiLumz to specify CCTs & controls



## OVERVIEW

**PERFECT FOR TROFFERS**  
**160 LUMENS/WATT**  
**MAGNETIC APPLICATION OF STRIPS AND DRIVER**  
**INTEGRATED HEAT SINK**  
**LOW GLARE**

Installation is a breeze. HiLumz RipStrips provide excellent light for troffers and lowbays in a highly economical package. No more bypassing ballasts, rewiring or replacing faulty tombstones. Ripstrips are direct A/C power to a driver and direct connection to strips, eliminating any failure point.

## FEATURES

- Faster install than ballast bypass tubes
- Magnetic backed strips and driver; driver needs a single tek screw
- Quick connect plug and play
- CRI >83 for interior color clarity
- Flicker-free, hum-free, buzz-free
- Available in variety of wattages for various application heights
- Standard 0-10V control enabled dimming
- Overpopulated LED board, 126 LED's per 4' strip
- Eliminates failure points from the system; ballasts, tombstones



WATTAGE ADJUSTABLE TOGGLE

## ORDERING

**EXAMPLE HMS-2440-4080:** Two four foot strips with 24/30/40 adjustable driver in 4000k with no controls

Product	SKU	Color	Packaging
HMS	1430	4080 - 4000K	B - Bulk C - Individual Kit Case
	2230	5080 - 5000K	
	3230		
	2440		
	3440		



## OVERVIEW

**Replaces up to 400 Watt Quartz, Par 46, Par 56**

**30W- over 4,600 lumens**

**50W - up to 6,500 lumens**

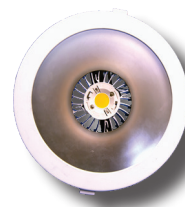
Small, powerful LED system that packs a punch. With vast beam control options, line or low voltage dimming, and custom install solutions and support.

## FEATURES

- TRIAC (Forward-Phase) and ELV (Reverse-Phase) line dimming available
- 0-10V dimming with 1 to 100% dimming available
- HiLumz mounting expertise
- Full suite of LEDil optics



optics



trim kits



For best results, installing the driver external of the can is recommended. In some applications with larger cans and air control, the driver can be installed on the light engine.

## ORDERING

**EXAMPLE DC30-4080-V2-1T-49:** 30 watt unit at 4000K, 80 CRI with vertical screw in to E26 adapter, 49 degree reflector

Product	CCT/CRI	Driver	Mounting	Optics
DC30 DC50	5080 = 5000K 4080 = 4000K 3080 = 3000K 2780 = 2700K 2280 = 2200K DW = Dim to warm (3500k to 2200k)	ID = 120-277V 1T <sup>1</sup> = 120-277V Triac LT <sup>1</sup> = Lutron LTEA2W DX = DMX Direct DXR <sup>2</sup> = DMX Remote	V1 = E11 Vertical Screw In V2 = E26 Vertical Screw In V3 = E39 Vertical Screw In H2 = E26 Horizontal H3 = E39 Horizontal 4TM = 4" Can Trim Plate with Spring Locks 6TM = 6" Can Trim Plate with Spring Locks 8TM = 8" Can Trim Plate with Spring Locks PT = Universal Plate CSTM = Custom	N = No Optic (-115°) 16 = 16° reflector 25 = 25° reflector 49 = 49° reflector 65 = 65° reflector 91 = 91° reflector





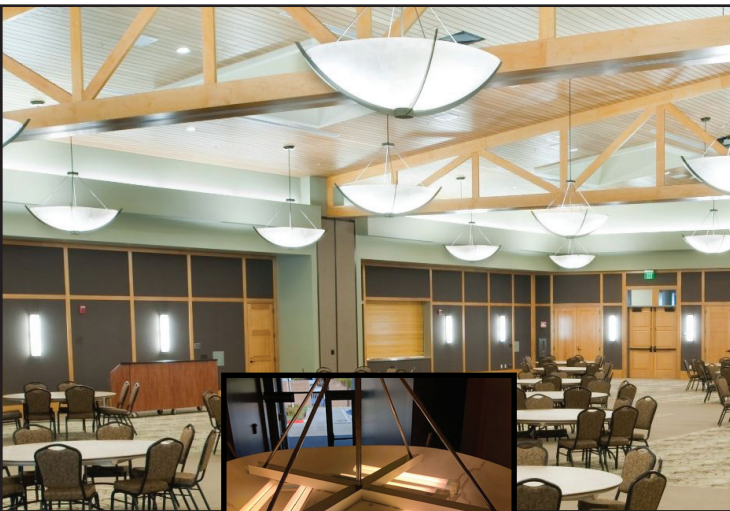
### Eliptipar® LED Conversion Kit

- Numerous Configurations
- Line Voltage Dimming



### Linear Cove Lighting

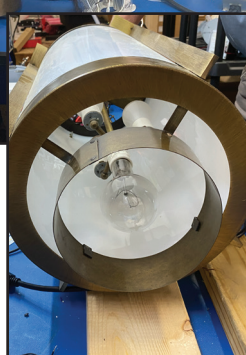
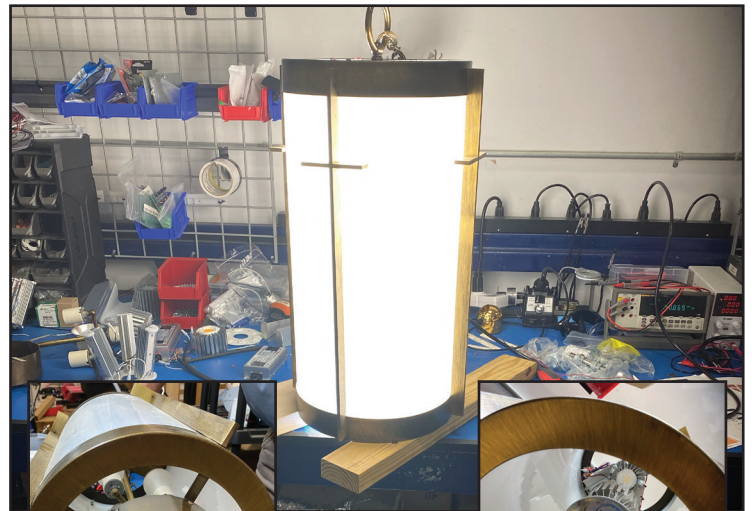
- Programmable lumens / foot
- Line Voltage Dimming
- Long runs on Single Driver



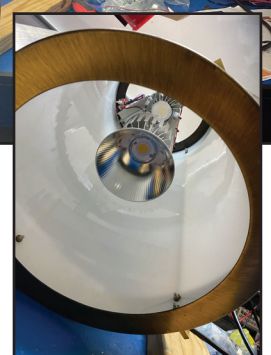
*before - t8's*

### Chandelier LED Conversion Kit

- Up/Down Lighting
- Pop-In Linear Kit
- Line Voltage Dimming



*before*



*after*

### Church Pendant LED Kit

- Separate Controls for Globe Light and Downlight Intensity
- DMX, Wireless, or Line Dimming

## OVERVIEW

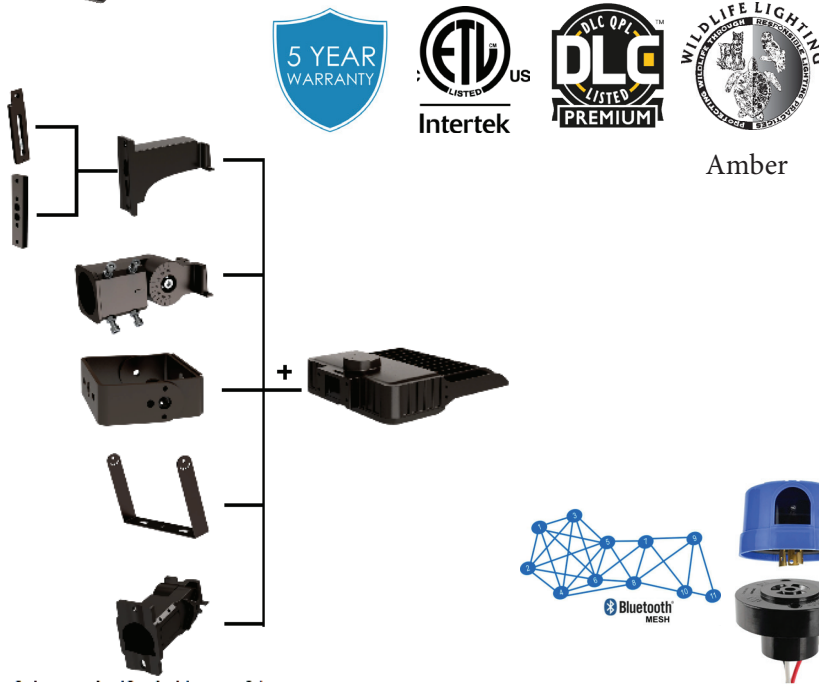


### Terrific Area Light Built to Specification Full Mounting Solutions Premium Electronics

The HiLumz Mini and Mini+ area light is a great all around light system that covers 175W to 1000W equivalent HID light performance with a modern seagull-curve design. Excellent thermals and field serviceability make the Mini a product that can be installed with confidence.

## FEATURES

- Available in 2200k, 2700k, 3000k, 4000k, 5000k
- 120 to 480VAC input
- >Ra80
- 90,000 L70
- Serviceable driver and surge protection
- T2, T3, T4, T5 optical options
- Simple “one-person install” system
- Integration of controls of your choice



## ORDERING

**EXAMPLE HLAR03-120-U-40K-4-B-SF:** 120 watt unit, 120-277V at 4000K, with T4 optics and slip fitter mount

SKU	WATTAGE	VOLTAGE	CCT	OPTICS	FIXTURE COLOR	MOUNTING	CONTROLS	SHIELD
HLAR03	40	U (120-277)	50K 5000K	2 T2	D Dark Bronze**	S/RP Pole Mount	N None	SH1 House side
	75	H (277-480)	40K 4000K	3 T3	B Black	(square or round)	P Photocell	SH2 4-side drop
	100		30K 3000K	4 T4	W White*	TRU Trunnion	P2 Smart Photocell	
	120		A Amber*	5 T5	Other	SF Slip Fitter	M Motion	
	150						C Surge	
	200							
	240							
	300							

\* Available with consultation

\*\* Primary stock, custom paint color available



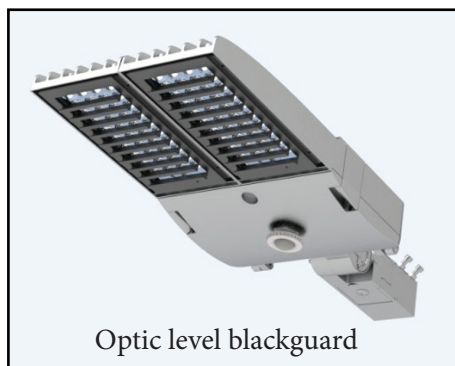
## OVERVIEW

**60k to 90k Lumens****5050 Chipset with Fantastic Optical Performance****A Proven Winner with Tennis Courts (Class III)**

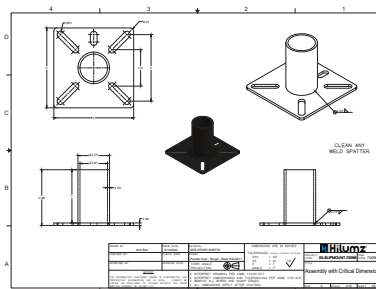
The HiLumz NightShine Grand was designed as a great high mast light for replacing up to 2000W systems. Recently, a redesigned optical package positioned it as a proven winner for tennis courts.

## FEATURES

- Available 5000k (other CCT special order)
- 120 to 480VAC input
- >Ra80
- 110,000 L70
- Tool-less entry serviceable driver and surge protection



Optic level blackguard



Tennis Lighter Mount Bracket

## ORDERING

**EXAMPLE AR08-500-1N-57K-T5-SF-N-10:** 500 watt unit on a 120-277V line at 5700K, with T4 optics and slip fitter mount, 10 year warranty

SKU	WATTAGE	VOLTAGE	CCT	OPTICS	MOUNTING	CONTROLS	SHIELDS
AR08	400 500 600	1N (120-277) 2N (277-480)	50K = 5000K	T4 T2	SP Pole Mount (square) RP Pole Mount (round) TRU Trunnion SF Slip Fitter	N None D1 Photocell D2 Smart Photocell D4 Motion C1 Custom	BS Back shield* 4S Four side shield*  * cost adders



## OVERVIEW

### IP67 TOUGH WATERPROOF 3000 TO 6500 LUMENS UP OR DOWN CONFIGURATION

An excellent linear wall washer with an attractive decorative shield to hide the light source and improve aesthetics. Tremendous flexibility for on-site adjustments to capture up light or down light. Comes in a range of optic and lumen packages.

## FEATURES

- 70,000 Hour L70 Life
- -25°C to 55°C
- 90 degree beam angle
- 3000 to 6500 Lumens
- 0-10V dimming
- Terrific Mounting system for strength
- Excellent aesthetics
- Adjustable shield tilt
- Up or Down directional



## ORDERING

EXAMPLE **HLWF-1958-48-5080-A-G :**

Product	Wattage	Color/CRI	Input Voltage	Paint Color
HLWF-1958	48	5080*	A (120V-277V) B (480V)	G - Gray**

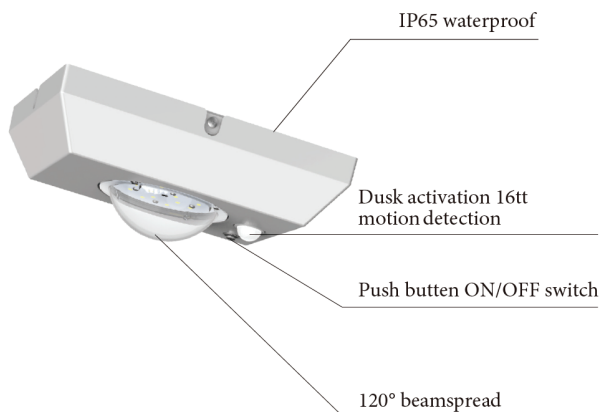
- Alternate CCT available upon request
- Custom color available upon request



## OVERVIEW

### Solar Canopy with Motion Sensor IP64 Water/Bug Proof LFP 32650 3.2V/6000mA Battery Serviceable Battery

Thousands of the Hatch Canopy Solar light have been installed in breezeways throughout the Florida public school system. The system is purpose designed for metal roofs or any application where canopy light is needed with no AC power infrastructure.



## FEATURES

- IP64 Water/Bug Proof
- LFP 32650 3.2V/6000mA Battery
- Plug and Play connectors
- Mounting system for canopy light and solar panel
- Outdoor rated
- Serviceable and replaceable battery
- Motion controls: Turns down to 5% to last 11 hours and jumps to 100% brightness when motion is detected.



## ORDERING

PRODUCT	WATTAGE	L/W	LUMENS, 5000K	VOLTAGE	CRI	OP TEMP
HLSC02	7 Watts	138	~980 at full output	N/A	80+	-10°C +40°C

Ordering SKU: **HLSC02-50k**

## A PROVEN PROCESS FOR WINING

### 1. IDENTIFY OPPORTUNITY

- Expensive fixture replacement
- High replacement cost
- Restrictions with design changes

### 2. COMMUNICATE SPECIFICS TO HILUMZ TEAM

- Lumen, input voltage, optical requirements, controls
- Fixture images if possible but not necessary at this stage
- Fixture count

### 3. FAST QUOTE

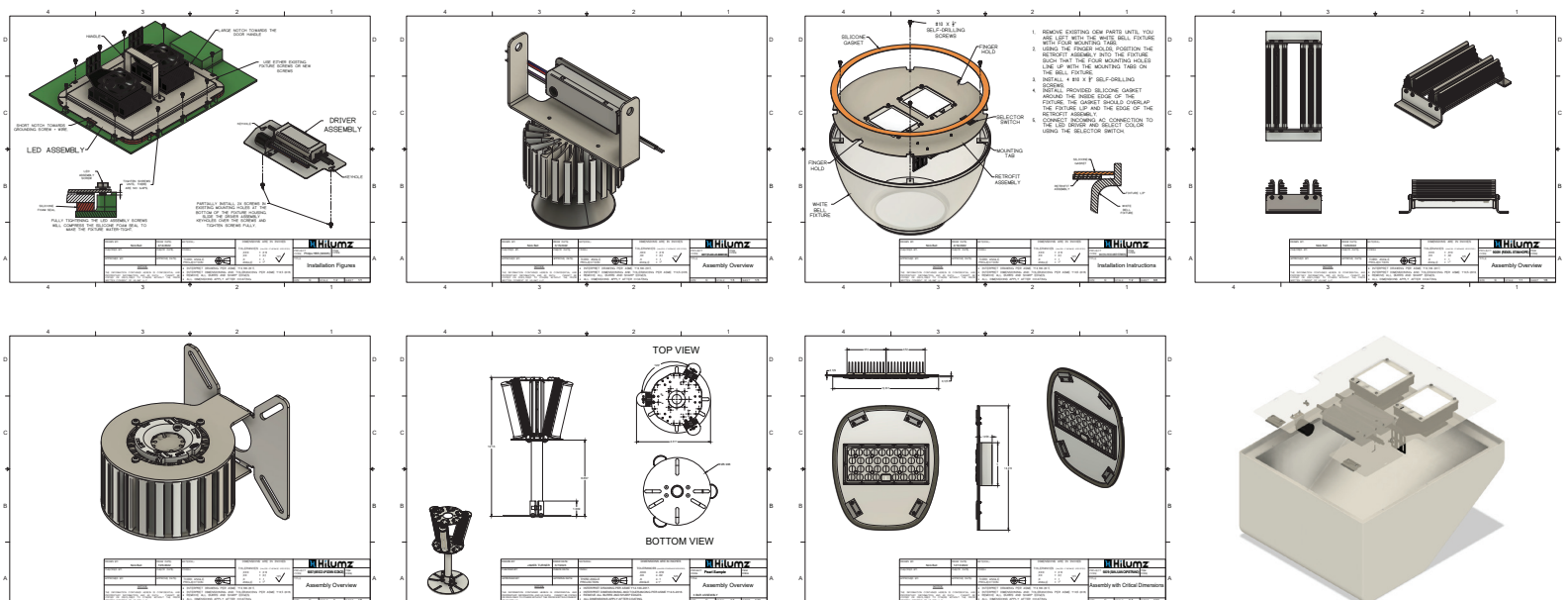
- Same day response on a budget price
- Case study of same or like-kind applications

### 4. QUICK TURN PROTOTYPE

- Often images and consultation is enough for a trial
- Send us a fixture for a perfect fit and optimal installation time

### 5. FINAL MODIFICATIONS & ORDER DELIVERY

- Engineering work completed, fast production





## HILUMZ USA EXPERTISE

# INFRASTRUCTURE LIGHTING UPGRADES

...how to win these awesome jobs

**H**ilumz has won major lighting upgrade jobs in tunnels, airports, parks & rec, DOT's, public transit, military, bridges and other. In some cases, these jobs are specified through an investment budget. But in most cases, we win these jobs through *maintenance budgets*.

With limited remaining manufacturing in traditional bulbs and ballasts, maintenance teams are facing a new reality; the status quo of transitional lighting means that lights are not on. For highly engineered infrastructure jobs, it's not as easy as just replacing the fixture.

While the case for an LED upgrade has never been more clear, replacing HID fixtures is often infeasible or full of red tape. This is where conversion kits win.

**Here are three major reasons fixture replacements are sub-optimal.**

1. We have seen a significant downgrade in fixture quality and charm.

Timeless cast iron post top fixtures are being replaced by second grade aluminum LED imports. Big mistake.

2. Replacing fixtures open up exhausting design, engineering, permitting and RFP processes that can take years to complete. By the time the process is completed, we have missed years and years of positive ROI value creation ... money we never get back.

3. Maintenance teams can use conversion kits as part of their maintenance budget. This is huge! It's the maintenance team's job to keep the lights on and they have authority to do

so. This allows for fast approvals and limited competitive bidding.

There are other considerations too; consider the option value of a future full fixture replacement. LED technology is moving quickly. It will be exciting to see what comes along 5 to 10 years from now.

The option to change out fixtures does not go away with a conversion kit; but it sure solves an immediate problem!

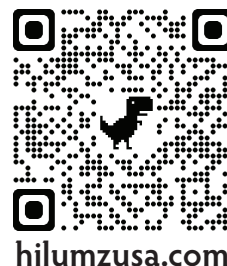
**Quickly capture all the  
benefits of LED for a  
fraction of the cost**



The Professional's LED Choice

678-867-9200

[sales@hilumzusa.com](mailto:sales@hilumzusa.com)



[hilumzusa.com](http://hilumzusa.com)

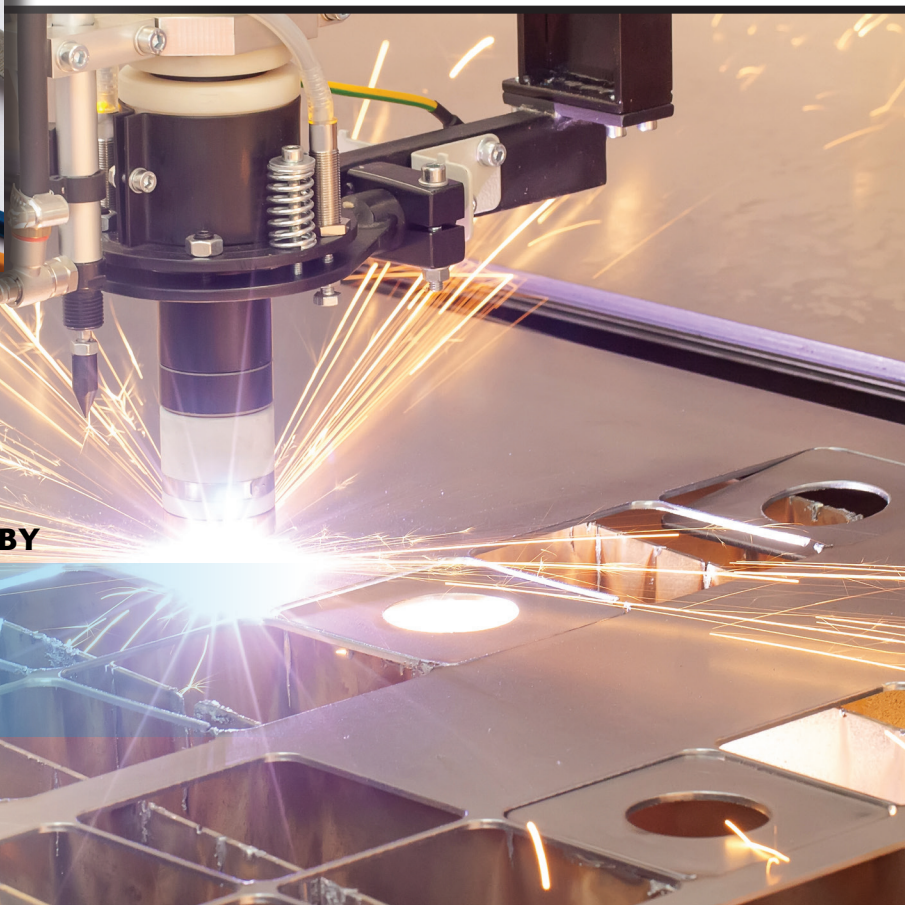
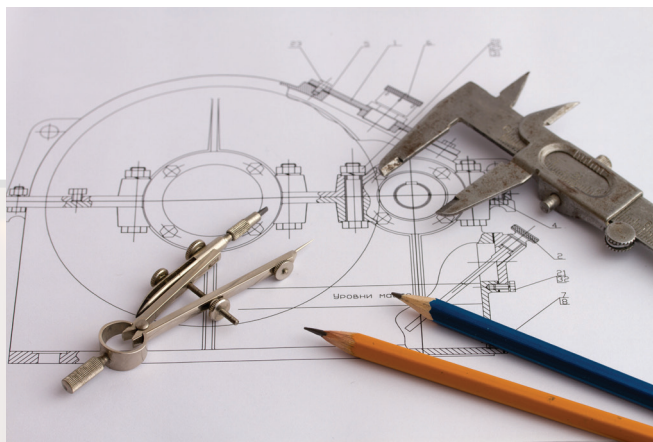
**PROJECT MANAGEMENT**

**MECHANICAL & ELECTRICAL DESIGN**

**ASSEMBLE / BUILD**

**SUPPLY CHAIN EXCELLENCE**

**PHOTOMETRIC ANALYSIS**



**APPLICATION CONSULTANTS STANDING BY**

**Contact:**

1335 Ridgeland Pkwy - Suite 150 - Alpharetta, GA 30004

(678) 867-9200 (press 1 for sales support)

Email: [sales@hilumzusa.com](mailto:sales@hilumzusa.com)