

### OVERVIEW



## 4,000 to 15,000 Lumen System Decorative & Industrial Indoor/Outdoor Application

Integrated, serviceable, customizable, and tough LED light system for a variety of post top, garage, street light, and decorative lantern style fixtures.

Easily customizable installation bases, downward angled light engines to optimize surface foot candles and a serviceable and separate driver system to maximize operating life.

### FEATURES

- Excellent Components
- 0-10V dimming
- HiLumz mounting expertise
- House Side / Street Side directional



3-BAR



6-BAR

BOTTOM UP MOUNT



3-BAR



6-BAR

TOP DOWN MOUNT

## PERFORMANCE SPECIFICATIONS

Product	Wattage	Replaces	Lumens @4000k	# of Light Bars	CRI	Voltage	Op Temp
HLPTK	30	100-175W	3,900	3 Light Bars	80+	100-277V	-40°C +50°C
	50	175-250W	6,100				
	60	250W	7,200				
	75	250W	9,300	6 Light Bars			
	90	250W-400W	11,160				
	120	400W	14,400				

- L80 of light engine: >100,000 hours
- Driver Life: Rated at 50,000 hours



STANDARD KIT WITH DRIVER

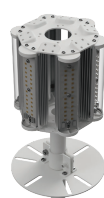
TILT

STRAIGHT

TILT

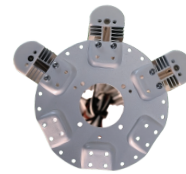
STRAIGHT

DIRECTIONAL



30, 50, 60 WATTS

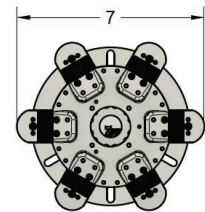
90, 120 WATTS



STREET SIDE

HOUSE SIDE

ASYMMETRIC (180°)  
FOR 30, 50, 60 WATT ONLY



## ORDERING

EXAMPLE **HLPTK-50-U-40K-SM-T-PT1-SP 10:** 50 watt unit at 4000K, 80 CRI with Bottom Up Plate Mount, 360°, 10kV Surge

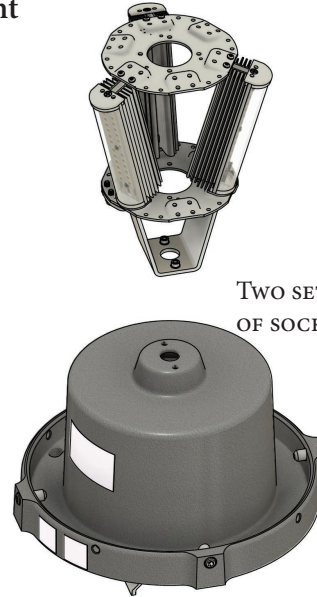
Product	Wattage	Input Voltage	Color/CCT	Directional Lighting	Light Angle
HLPTK	30 50 60 75 90 120	U = 100-277VAC H = 480VAC	50K = 5000K 40K = 4000K 35K = 3500K 30K = 3000K 27K = 2700K 22K = 2200K AM = Amber	SM = Symmetric (360°) ASM = Asymmetric (180°)	S = Straight T = Downward Tilt
			<b>Mounting</b>	<b>Controls</b>	
			SKB = Socket Bracket PT1 = Bottom Up Plate PT2 = Top Down Plate BE26 = Bottom Up E26 BE39 = Bottom Up E39 TE26 = Top Down E26 TE39 = Top Down E39 9XXXX = 5-digit Custom Mount CSTM = Custom (contact HiLumz)	PC3 = 3-Pin Photocell PC7 = 7-Pin Photocell D = Dali Enabled PC7D = 7-Pin + Dali	
			<b>Surge</b>		
			SP10 = 10kV Surge SP20 = 20kV Surge		



## MOUNTING

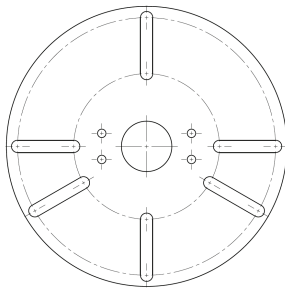
### SKB E39 Socket Replacement Bracket - Direct Mount

STANDARD E39 SOCKETS ARE MOUNTED BY TWO ATTACHMENT SCREWS. REMOVE SCREWS AND DISCARD SOCKET. THE SMB BRACKET HAS SET SCREWS FOR EASY, SECURE INSTALLATION AND DIRECT WIRE TO LED DRIVER.

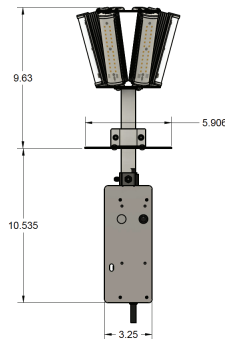


TWO SET SCREWS IN REPLACEMENT OF SOCKET SCREWS

### PT1, PT2 Universal plate for direct mount



5.9" DIAMETER



POPULAR PLATE MOUNT OFFERED WITH ADJUSTABLE TABS FOR A ADDITIONAL FLEXIBILITY TO MATCH A VARIETY OF BASES.

CUSTOM PLATES SIZES AVAILABLE

### BE26, BE39 E26 Medium or E39 Socket Base



E39 ADAPTER

E26 MEDIUM SOCKET WITH E39 MOGUL BASE ADAPTER. SOCKETS CAN BE FAULTY SO WE RECOMMEND USING PT OR SKB WHERE POSSIBLE