

**Case Study Overview: HiLumz delivered ~900 units of 1,000 Watt equivalent conversion kits for Chicago O'Hare airport fixtures that lightup the airplanes around the gates.**

**PROBLEM**

- Facility had tried several options including 240 Watt and 300 Watt corn cobs but failures and lack of light output made it unworkable.
- With almost 1,000 lights, other standard retrofit systems were difficult to install and unstable with high mast vibration.

**HILUMZ SOLUTION**

- HiLumz built a custom kit. 480VAC driver and 480VAC 20kV surge protection in an easy to install kit.
- Two DM150's (300 Watts total) in a custom plate kit that allowed one installer to fully mount the kit.

**PROJECT APPROVAL**

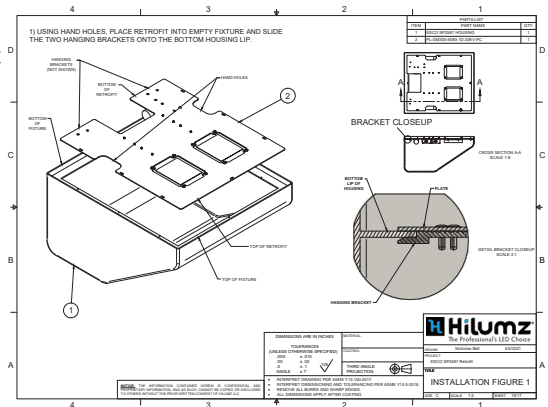
- O'Hare facility team installed 20 units for a six month trial, loved it, and ordered the kits.
- Funded within the maintenance budget.

**RESULTS**

- Awesome lighting
- 70% energy savings
- Happy customer!!
- Two new jobs since!!!

Watch Installation Video

<https://vimeo.com/560514550>



before



after

