

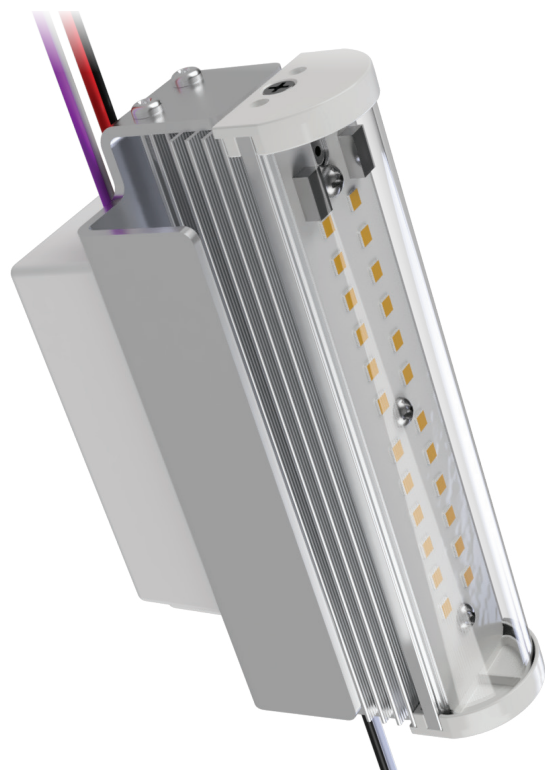
OVERVIEW

IP 54 820 to 5600 Lumen Packages Separated or Integrated 120V-277V Driver

The Tough Bar low power LED module is a fantastic fit for any application requiring high quality light and long life in tough and tight conditions.

FEATURES

- Excellent light module adaptable to hundreds of applications using HiLumz customized mounting solutions.
- Multiple modules available in a single application
- >Ra80
- Flicker-free, hum-free, buzz-free
- 110° beam pattern
- Rated at -25°C to 85°C
- IP54 Light Module with IP66 wire connections & driver system
- Protective covering to prevent dust and physical damage to LED module



RETROFITTING

- Wall Sconces
- Bollards
- Decorative
- Step Lighting
- Exterior Accent Lighting
- Docks/Marinas
- Endless Applications



ORDERING

EXAMPLE **TB-12-3080-A-RA**: 12 Watt Tough Bar Module at 3000K with remote driver and adhesive back

Product	Wattage	Color/CRI	Voltage	Mounting
TB02	6	Amber	A (120-270V)	RB - Remote driver; bracket attachment RA - Remote driver; adhesive attachment IB - Integrated driver; bracket attachment IA - Integrated driver; adhesive attachment Standard unit is screw attached. We also provide adhesive and magnet attachment options. Please contact a HiLumz sales associate to discuss.
	12	2280		
	20	2780		
	25*	3080		
	40*	3580		
	60**	4080		
	60**	5080		

* Two light bar configuration

** Three light bar configuration