

Binder of Specification Sheets

2023 01



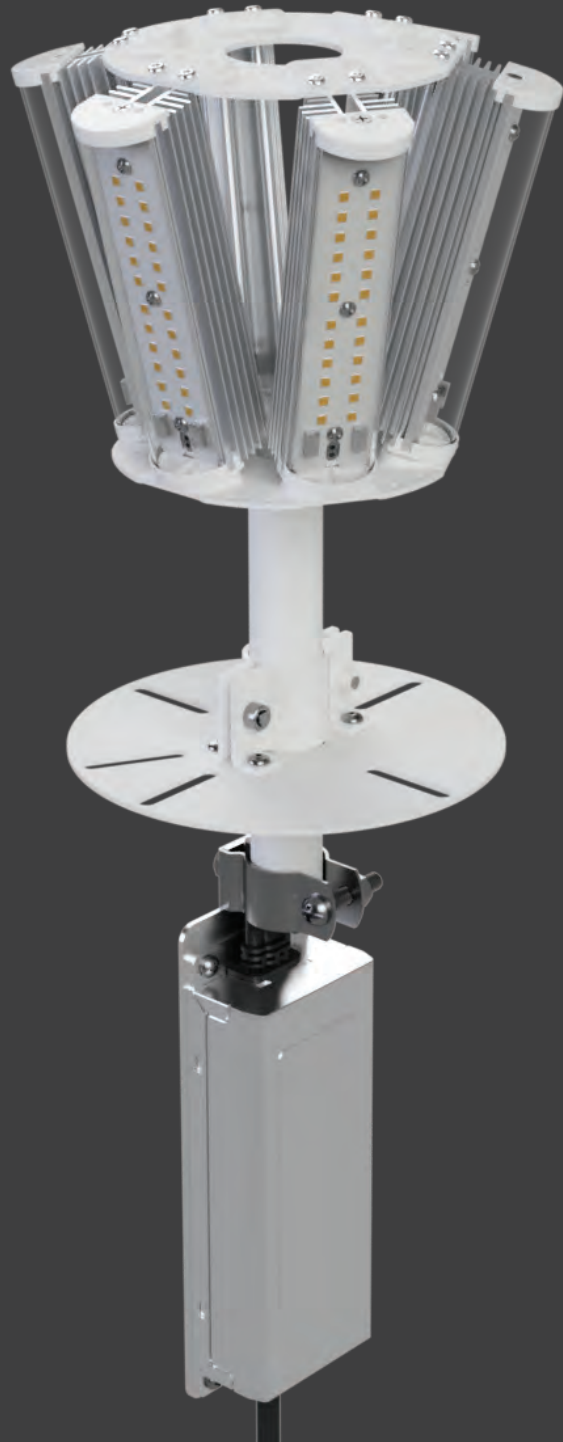
Hilumz[®]

The Professional's LED Choice

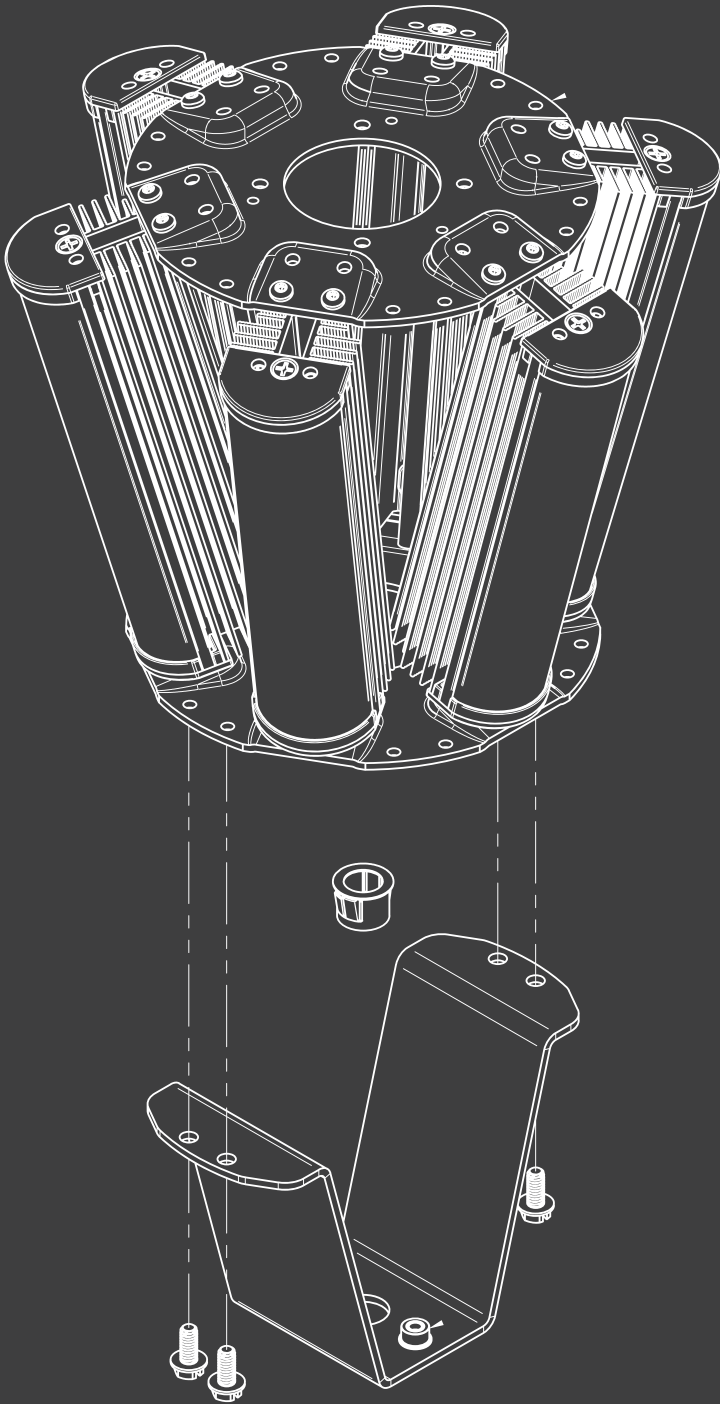
Post Top Pearl[®] Light System

Preserve historical,
architectural post top
luminaires while
leveraging the latest
lighting and control
technology.

HiLumzUSA.com



 **HiLumz[®]**
The Professional's LED Choice



Custom Design for
Best fit & Fastest Install

ACORNS POST TOPS

SPHERE POST TOPS

GLOBE POST TOPS

ACORN STREET LIGHTS

Field Conversion Kits

Holophane[®]
Acuity[®]
Sternberg[®]
Cooper[®]
Current[®]
Many Others



Utility Approved



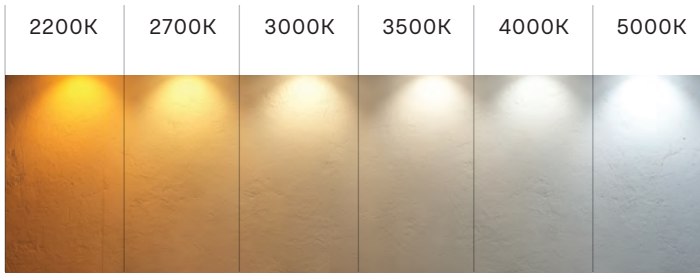
OEM specific systems



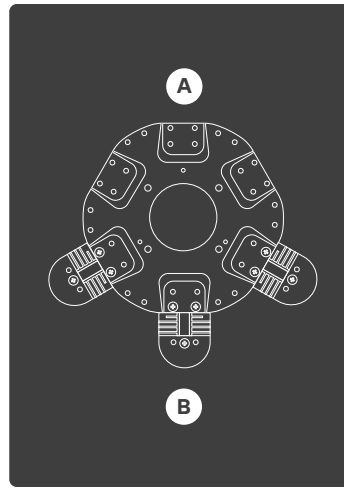
Experience
with majority
of manufacturers

1. Select Warm to Cool Color (CCT) & 360° vers us 180° distribution

Available in



From 3,500 to 15,000 lumens
60 Watt to 400 Watt Replacement



T3
A. House Side
B. Street Side



Dark Sky
DC Barrell

2. Select mount

Bottom Up Mount



3-Bar

6-Bar

Top Down Mount



3-Bar

6-Bar

Univeral Mounting Brackets

Custom Mounting Plates

Experience with all major brands

3. Select driver, surge & controls



Utility
Requirements



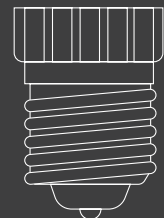
0-10V



Surge
Protection



3-Pin |
5-Pin | 7-Pin
Virtual Midnight



E26 Medium
E39 Mogul



HiLumz®

The Professional's LED Choice



Light systems
worthy of
our best light
fixtures

HiLumz USA

1335 Ridgeland Parkway

Suite 150

Alpharetta, GA 30004

sales@hilumzusa.com

678-867-9200

HiLumzUSA.com

“

We had too many experiences with light engines that are un-serviceable or would tilt in the fixture because of a bad mount. We wanted a quality product that would withstand the tough conditions of a street light.

- Municipal Lighting Program Manager



OVERVIEW

4,000 to 15,000 Lumen System Decorative & Industrial Indoor/Outdoor Application

Integrated, serviceable, customizable, and tough LED light system for a variety of post top, garage, street light, and decorative lantern style fixtures.

Easily customizable installation bases, downward angled light engines to optimize surface foot candles and a serviceable and separate driver system to maximize operating life.

FEATURES

- Excellent Components
- 0-10V dimming
- HiLumz mounting expertise
- House Side / Street Side directional



BOTTOM UP MOUNT



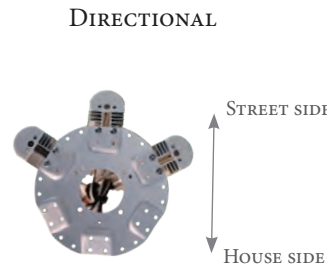
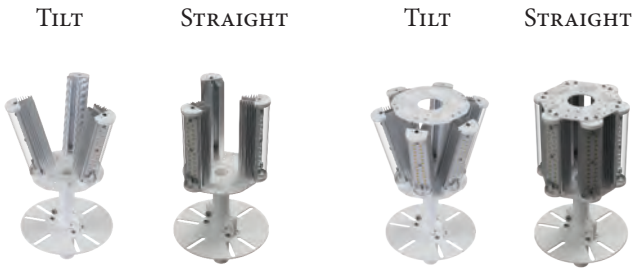
TOP DOWN MOUNT

PERFORMANCE SPECIFICATIONS

Product	Wattage	Replaces	Lumens @4000k	# of Light Bars	CRI	Voltage	Op Temp
HLPTK	30	100-175W	3,900	3 Light Bars	80+	100-277V	-40°C +50°C
	50	175-250W	6,100				
	60	250W	7,200				
	90	250W-400W	11,160	6 Light Bars			
	120	400W	14,400				

* Lumens include ~15% light loss for fixture diffusor

- L80 of light engine: >100,000 hours
- Driver Life: Rated at 50,000 hours



30, 50, 60 WATTS

90, 120 WATTS

ASYMMETRIC (180°)
FOR 30, 50, 60 WATT ONLY

STANDARD KIT WITH DRIVER

ORDERING

EXAMPLE **HLPTK-50-U-40K-SM-T-PT1-SP**: 50 watt unit at 4000K, 80 CRI with Bottom Up Plate Mount, 360°, 10kV Surge

Product	Wattage	Input Voltage	Color/CCT	Directional Lighting	Light Angle
HLPTK	30 50 60 90 120	U = 100-277VAC H = 480VAC	50K = 5000K 40K = 4000K 35K = 3500K 30K = 3000K 27K = 2700K 22K = 2200K AM = Amber	SM = Symmetric (360°) ASM = Asymmetric (180°)	S = Straight T = Downward Tilt
				Mounting PT1 = Bottom Up Plate BE26 = Bottom Up E26 BE39 = Bottom Up E39 PT2 = Top Down Plate TE26 = Top Down E26 TE39 = Top Down E39 9XXXX = 5-digit Custom Mount CSTM = Custom (contact HiLumz)	Controls PC3 = 3-Pin Photocell PC7 = 7-Pin Photocell D = Dali Enabled PC7D = 7-Pin + Dali Surge SP10 = 10kV Surge SP20 = 20kV Surge

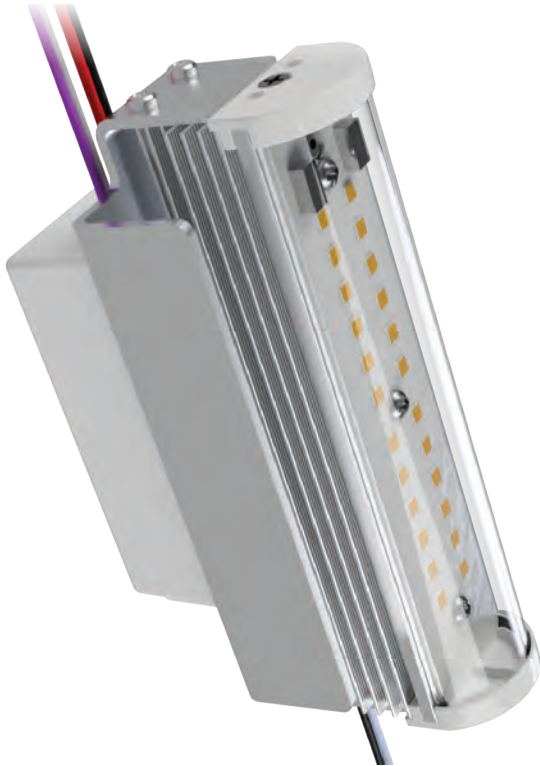
HILUMZ USA

1335 Ridgeland Parkway
Suite 150
Alpharetta, GA 30004

sales@hilumzusa.com
678-867-9200
hilumzusa.com

CALL US FOR AN APPLICATION ASSESSMENT

OVERVIEW



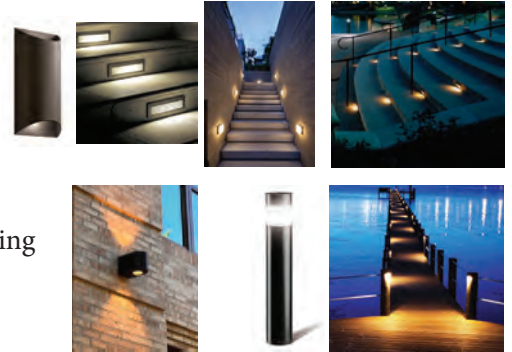
- ✓ **IP 54**
- ✓ **820 to 5600 Lumen Packages**
- ✓ **Seperated or Integrated 120V-277V Driver**

The Tough Bar low power LED module is a fantastic fit for any application requiring high quality light and long life in tough and tight conditions.

APPLICATION

RETROFITTING

- Wall Sconces
- Bollards
- Decorative
- Step Lighting
- Exterior Accent Lighting
- Docks/Marinas
- Endless Applications



FEATURES

FULLY CUSTOMIZED SOLUTIONS FOR EACH PROJECT

- Excellent light module adaptable to hundreds of applications using HiLumz customized mounting solutions.
- Multiple modules available in a single application

TERRIFIC LIGHT QUALITY

- >Ra80
- Flicker-free, hum-free, buzz-free
- 110° beam pattern

HiLUMZ HEAT STANDARDS

- Rated at -25°C to 85°C
- Over temperature cutoff protection

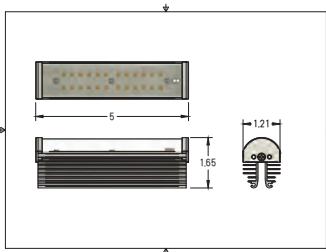
INDUSTRY-LEADING DURABILITY

- IP54 Light Module with IP66 wire connections & driver system
- Protective covering to prevent dust and physical damage to LED module

PERFORMANCE SPECIFICATIONS

Product	Bars	Wattage	Lumens	Color	CRI	Voltage
TB02	Single Bar	6 Watt	820	Amber, 2200k, 2700k, 3000k, 3500k, 4000k, 5000k	80+	120-277 VAC
		12 Watt	1550			
		20 Watt	2880			
	Dual Bar	25 Watt	3650			
		40 Watt	5600			

- LIGHT ENGINE -

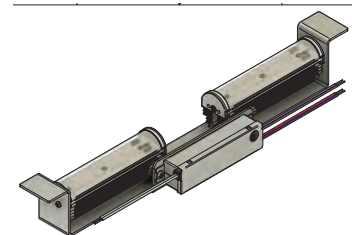


Higher wattage packages available by mounting multiple units in series.
HiLumz will pre-wire accordingly for a single input.

- SINGLE BAR SYSTEM -



- DUAL BAR SYSTEM -



Configuration of the multiple bars can be modified for various solutions

ORDERING

EXAMPLE **TB-12-3080-A-RA**: 12 Watt Tough Bar Module at 3000K with remote driver and adhesive back

Product	Wattage	Color/CRI	Voltage	Mounting
TB02	6	Amber	A (120-270V)	RB - Remote driver; bracket attachment RA - Remote driver; adhesive attachment IB - Integrated driver; bracket attachment IA - Integrated driver; adhesive attachment Standard unit is screw attached. We also provide adhesive and magnet attachment options. Please contact a HiLumz sales associate to discuss.
	12	2280		
	20	2780		
	25	3080		
	40	3580		
		4080		
	5080			

HILUMZ USA

1335 Ridgeland Parkway
Suite 150
Alpharetta, GA 30004

sales@hilumzusa.com
678-867-9200
hilumzusa.com



Optional IP68 waterproof wire connector
(pre-wired to driver)
Light engines and driver are not IP68 waterproof

- Call us for Consultation -

MARKET LEADING PERFORMANCE

HIGHEST QUALITY COMPONENTS

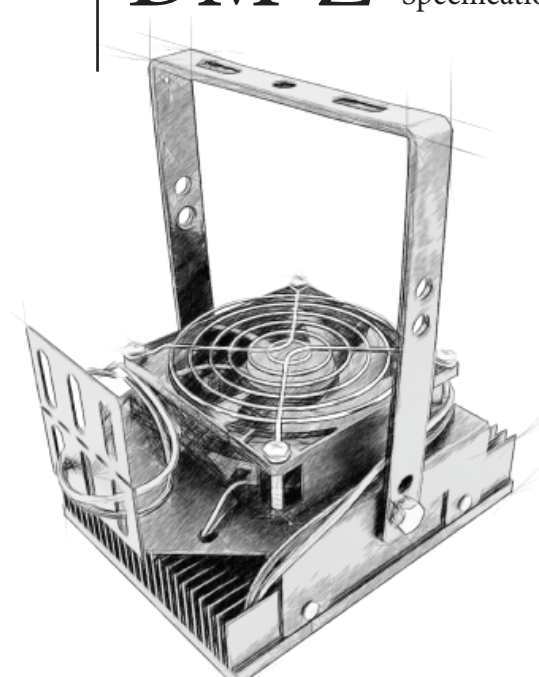
EXCELLENT HEAT MANAGEMENT

PLUG & PLAY KITS

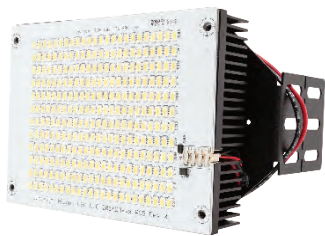
CUSTOM INSTALL SYSTEMS

FULL RANGE OF OPTICS

THE PROFESSIONAL'S CHOICE



DELIVERING EXCELLENT LIGHT TO EVERY STATE IN THE UNITED STATES OF AMERICA



DM Light Engine

- 288 Samsung LM561C midpower LED's powered under 150 mA.
- Custom extruded aluminum heat sink.



DMZ Light Engine

- 32 Seoul hipower LED's
- powered at ~700mA



Meanwell HLG Driver Series

- 120-277 or 480 VAC
- 0-10V Dim to Off - Potted
- Industry Leading Quality

- | | |
|----------------------|-------------------------------|
| • SHOEBOX FIXTURES | • STREETLIGHTS |
| • CAR DEALERSHIPS | • BELL HOUSING |
| • BELL STREET LIGHTS | • CYLINDER SHOEBOX |
| • TUNNEL LIGHTS | • WAREHOUSE/GYMNASIUM |
| • FLOOD LIGHTS | • TENNIS COURTS |
| • SIGN LIGHTERS | • INDOOR TENNIS COURT UPLIGHT |

ANY INSTALLATION
175 WATT TO 1000 WATT
REPLACEMENT

PERFORMANCE SPECIFICATIONS

Product	Size	Tested Input Wattage	Replaces	Delivered Lumens	Optics	Typical Height	CRI
DM60	Single Head	57	200 - 250 Watts	8,820	N/A	15-25 ft	80+
DM80		76	250 - 300 Watts	11,500	N/A	15-25 ft	
DM100		96	250-400 Watts	13,100	N/A	18-30 ft	
DM120		116	300 - 400 Watts	18,390	N/A	20-30 ft	
DM150		149	400 - 500 Watts	22,800	N/A	25-35 ft	
DM240	Dual Head	232	600 - 1000 Watts	36,600	N/A	30-40 ft	70+
DM300		284	1000-1200 Watts	45,600	N/A	35-50 ft	
DMZ150	Single	139	300 - 400 Watts	15,200	T3, T5	25-35 ft	70+
DMZ300	Dual	278	750 - 1000 Watts	30,400	T3, T5	35-50 ft	

DMZ Light Unit available with a full range of optics

See separate specification sheet for 30/50 Watt DC units, Wall Pack Cartridge, and custom application specific solutions

Product	Length	Width	Height
Driver	9.0"	2.7"	1.5"
Single Head	6.0"	4.5"	3.0"
Dual Head	6.0"	10.0"	3.0"

Each light engine weights 2.4 lbs

ORDERING

EXAMPLE **DM150-5080-1N-V**: 150 Watt unit at 5000K with 120-277V dimmable driver and vertical FlexMount kit

Product	Color / CRI	Driver	Mounting	Optics
DM DM60 DM80 DM120 DM150 DM240 DM300	DM 5080 4080 3080	1N = non-Dimm 120-277v 1D = 1-10v Dimm 120-277v 2N = 480v single head 2N = 480v dual head	<u>SOCKET MOUNT</u> H = FlexMount, Horizontal Socket V = FlexMount, Vertical Socket VS = Vertical Mount E39 Screw In <u>SINGLE HEAD PLATES</u> FR = Plate Round Single Head FS = Plate Square Single Head FRD = Plate Round w/ Driver Mount FSD = Plate Square w/ Driver Mount <u>DUAL HEAD PLATES</u> FR = Plate Round FS = Plate Square FRD = Plate Round w/ Driver Mount FSD = Plate Square w/ Driver Mount CSTM = Custom	Blank (none) <u>DMZ Only</u> T3 T5 25° 78° IP - Requires IP Protection* Surge Blank (none) S277 = 120v-277v 10kV S480 = 480v 10kV
DMZ DMZ150 DMZ300	DMZ 5070 4070 2770			

MOUNTING

SOCKET MOUNT

H = FlexMount, Horizontal Facing Socket



V = FlexMount, Vertical Facing Socket



ASK ABOUT CUSTOM INSTALLATION SOLUTIONS

FlexMount system utilizes a bracket and hose clamp to securely attach to any E26 or E39 socket. The clamp offers incredible strength while avoiding the faulty and cheap metal of screw in alternatives. It's a professional solution designed to last and provide mounting flexibility.

Two simple attachment points allow easy positioning of the unit vertically or horizontally to ensure the light engine is properly centered in the fixture.

Available in Single or Dual Head Systems

VS = Vertical Mount E39 Screw In



For the fastest install in high bay application, HiLumz recommends the E39 socket screw in mount. The driver is mounted externally in the ballast box and direct wired to the light head.

PLATE MOUNT

Single Head Plates



Single Head Round (FS)
14.5" Plate Diameter
Extends from 14.75" to 21.5"

Dual Head Plates



Dual Head Plate (FS)
20.25" Plate Diameter
Extends from 20.0" to 26.5"

ASK ABOUT CUSTOM INSTALLATION SOLUTIONS

CONTROLS

- Motion Controls
- Wireless Solutions
- Surge Protection
- Step Down Transformers



PIR MOTION SENSOR BUILT IN





OVERVIEW

30W- over 4,200 lumens
50W - over 6,500 lumens

Small, powerful LED system that packs a punch. With vast beam control options, line or low voltage dimming, and custom install solutions and support.

FEATURES

- TRIAC Forward-Phase, Reverse-Phase Line Dimming
- 0-10V dimming
- HiLumz mounting expertise
- Full suite of LEDil optics



APPLICATION



REPLACES UP TO 500 WATT
 QUARTZ, PAR 46, PAR 56
 ANY CAN LIGHT!

OPTICS

Zorya
 340° blub effect for all
 directional light



GIVE US A CALL FOR AN
 APPLICATION CONSULTATION

PERFORMANCE SPECIFICATIONS

PRODUCT	WATTAGE	REPLACES	LUMENS*	CRI	VOLTAGE	DIMENSIONS	OP TEMP
DC	30	100-250W	5000k; 4,600 4000k; 4,400 3000k; 4,200 2700k; 4,100 2200k; 3,100	80+ 90+ optional	100-277V	7.25" x 4.25" 1.6 lbs	-40°C +60°C (30W) +55°C (50W)
	50	250-500W	5000k; 6,300 4000k; 6,100 3000k; 5,900 2700k; 5,700 2200k; 5,200				

* Adding optics will result in a light loss factor of 5% to 15%.
* Lumen output measured through a clear lens.

- L80 of light engine: >100,000 hours
- Driver Life: Rated at 50,000 hours



LTEA2W	Hi-lume	100%-1%	Hi-lume 1% 2-sire LED driver (120V forward phase only)
--------	---------	---------	--

ORDERING

EXAMPLE **DC30-4080-V2-1T-49**: 30 watt unit at 4000K, 80 CRI with vertical screw in to E26 adaptor, 49 degree reflector

Product	Color/CRI	Mounting	Driver	Optics
DC30 DC50	5080 = 5000K 4080 = 4000K 3080 = 3000K 2780 = 2700K 2280 = 2200K	V1 = E11 Vertical Screw In V2 = E26 Vertical Screw In V3 = E39 Vertical Screw In H2 = E26 Horizontal H3 = E39 Horizontal 4TM = 4" Can Trim Plate with Spring Locks 6TM = 6" Can Trim Plate with Spring Locks 8TM = 8" Can Trim Plate with Spring Locks PT = Universal Plate CSTM = Custom	1D = 120-277V 1T = 120-277V Triac LT = Lutron LTEA2W	N = None (115°) 16 = 16° (reflector) 25 = 25° (reflector) 49 = 49° (reflector) 65 = 65° (reflector) 91 = 91° (reflector) Z = Zorya (lens)

HILUMZ USA

1335 Ridgeland Parkway
Suite 150
Alpharetta, GA 30004

sales@hilumzusa.com
678-867-9200
hilumzusa.com

HiLUMZ®

The Professional's LED Choice



DC BARREL MINI HIGH OUTPUT CAN DOWNLIGHT LED RETROFIT

image: Tennessee church, DC50 4080



THE DC BARREL MINI IS 3RD PARTY TESTED BY INTERNATIONAL TESTING AGENCIES FOR PRODUCT LIFE, HEAT MANAGEMENT AND LIGHT PERFORMANCE.



HiLUMZ PARTNERS WITH THE INDUSTRY'S PREMIER CONVERTER & CONTROL SYSTEMS, INCLUDING LUTRON AND OTHERS, TO OPTIMIZE DIMMING COMPATIBILITY.



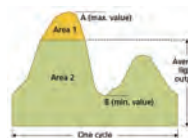
WITH OVER 8,000 DC BARRELL MINI UNITS INSTALLED AND UNDER WARRANTY, HiLUMZ DEMANDS THE HIGHEST STANDARDS OF PRODUCT QUALITY. SYSTEMS ARE DESIGNED TO FAR OUTLIVE THE WARRANTY PERIOD WITH MINIMAL LIGHT LOSS. EACH UNIT IS INDIVIDUALLY TESTED.



THE DC BARREL MINI WAS DESIGNED AND IS BUILT, TESTED, AND SERVICED BY THE HiLUMZ ENGINEERING TEAM IN ALPHARETTA, GA.



LATEST GENERATION COB LEDs WITH A LARGE SURFACE AREA FOR CLEAN APPLICATION AND EXCELLENT THERMAL CONDUCTIVITY. L70 LIFETIME HOURS OF OVER 120,000 HOURS OR MORE.



LOGARITHMIC AND LINEAR PROGRAMMING DRIVERS ALLOW FOR FLICKER FREE WHILE PASSIVE COOLING ENSURES NO EXTRA NOISE (WHERE COMPETITORS USE FANS THAT GENERATE ~10DB).

FOCUS ON LIGHT QUALITY

The lighting environment of a Sanctuary, theater, lobby or atrium is paramount to the experience. The job of Facility Managers is to maintain and deliver these high standards in light output, color and dimming.

Traditional light sources like Halogen demand constant servicing and expense to maintain consistent color and output. Many in the Sanctuary and theater community have been hesitant to transition to LED since

it is not easy syncing up an immersive lighting experience with complex panels which must deliver the correct light for aging eyes to read fine print, along with nuanced and warm low-light to capture our theatrical senses while avoiding flicker and noise.

The DC Barrel's high output downlight has proven it meets these demanding performance criteria with hundreds of successful installations.

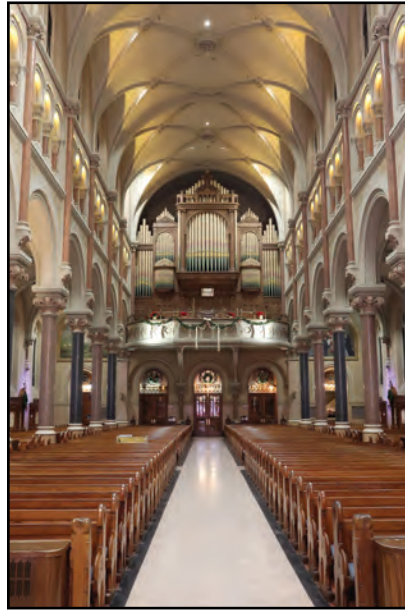


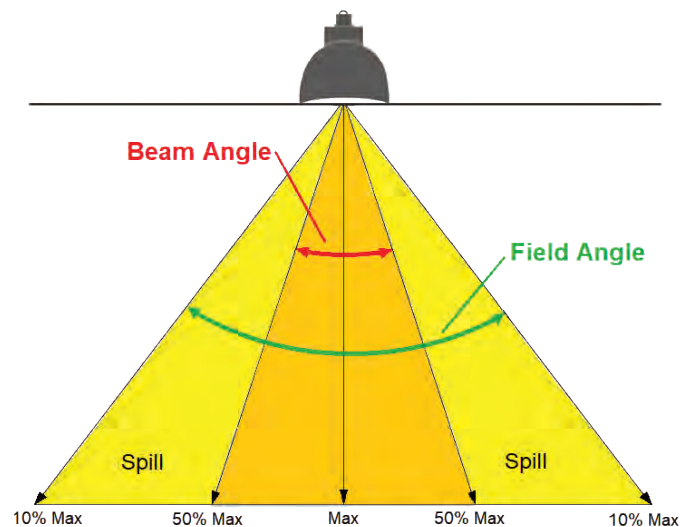
image: Boston Basilica, DC50 5080

Get started with making a meaningful improvement to your facility.

RECOMMENDED PHOTOMETRIC PERFORMANCE STANDARDS



- N = NONE (115°)
- 16 = 16° (REFLECTOR)
- 25 = 25° (REFLECTOR)
- 49 = 49° (REFLECTOR)
- 65 = 65° (REFLECTOR)
- 91 = 91° (REFLECTOR)
- Z = 180° BULB LENS



narrow



wide

CAREFULLY ENGINEERED AND PURPOSE BUILT TO MEET A WIDE RANGE OF NEEDS FOR SANCTUARY AND THEATRE LIGHTING

FULL COLOR SELECTION

OUR LED SELECTION TOOL ALLOWS FOR ANY KELVIN FROM 5000K (BRIGHT WHITE) TO 2200K (WARM).



PACKAGES UP TO 8,750 LUMENS

REPLACES:

- PAR 56
- PAR 64
- PAR 46
- 175, 250, 500 WATT HALOGEN & HALOGEN QUARTZ
- METAL HALIDE
- HIGH PRESSURE SODIUM



DIM TO WARM

ALLOWS FOR LIGHTING COLOR TO SHIFT WARM AS IT DIMS, CREATING A SUNSET/SUNRISE COLORSCAPE.

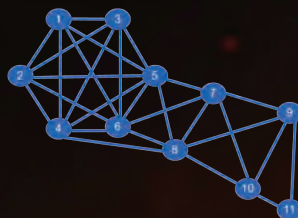
FULL MOUNTING SOLUTIONS

- E11 MINI CANDELABRAS
- E26 MEDIUM BASE
- BAYONET BASE
- TRIM KIT
- DIRECT WIRE PLATE MOUNT
- ATTACHMENT WITHIN EXISTING CAN



DIMMING SOLUTIONS

- TRIAC/LINE VOLTAGE DIMMING TO 5%
ALLOWS FOR EASE OF INSTALL WITH NO ADDITIONAL WIRING.
- 0-10V DIM TO BLACK
- DMX DIM TO BLACK
- BLUETOOTH WIRELESS MESH



HIGH PERFORMANCE CAN DOWNLIGHT LED RETROFIT

OVER 8,000 UNITS INSTALLED

DRIVER DEFECTIVE RATE, <0.5%

LIGHT ENGINE DEFECTIVE RATE, <0.2%



HiLumz[®]
The Professional's LED Choice

AFTER

BEFORE

“

Solving our maintenance problems and lowering our power bill paid for the project, but the light performance is what exceeded our expectations the most. The team worked directly with our dimming system and made the system work better than ever. Beautiful light.

GEORGIA-BASED SANCTUARY FACILITY MANAGER

HiLUMZ USA

1335 Ridgeland Parkway
Suite 150
Alpharetta, GA 30004

sales@hilumzusa.com
678-867-9200
HiLumzPRO.com

OVERVIEW



30W - over 4,000 lumens
50W - over 6,500 lumens

Small, powerful LED system that packs a punch. With vast beam control options, line or low voltage dimming, and custom install solutions and support.

Send HiLumz a sample fixture for a custom fit.

FEATURES

- TRIAC Line Dimming
- 0-10V dimming
- HiLumz mounting expertise
- Full suite of LEDil optics

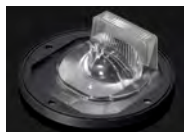


OPTICS

T3
Roadways, Post Tops for medium directional



T4
Roadways, Post Tops for wide directional



T5
All directional, wide area lighting



Zorya Bulb
340° blub effect for all directional light



125°
with no optic package

PERFORMANCE SPECIFICATIONS

Product	Wattage	Replaces	Lumens*	CRI	Voltage	Op Temp
DC	30	100-175W	5000k; 4,600 4000k; 4,400 3500k; 4,300** 2700k; 4,100 2200k; 3,100**	80+ 90+ optional	100-277V	-40°C +50°C
	50	175-250W	5000k; 6,300 4000k; 6,100 3500k; 5,900** 2700k; 5,700 2200k; 5,200**			

* Adding optics will result in a light loss factor of 5% to 15%.

** Not DLC qualified

- L80 of light engine: >100,000 hours
- IP66 Driver for Exterior Use

ORDERING

EXAMPLE **DC30-4080-F2-T3**: 30 watt unit at 4000K, 80 CRI with FlexMount e39 clamp & T3 optic

Product	Color	CRI	Mounting	Optics	Surge
DC30 DC50	50 = 5000K 40 = 4000K 35 = 3500K 27 = 2700K 22 = 2200K	80 90* * special order	V2 = E26 Vertical Screw In V3 = E39 Vertical Screw In H2 = Custom Bracket Mount H3 = Custom Plate Mount F2 = E26 FlexMount Clamp (non-screw in) F3 = E39 FlexMount Clamp (non-screw in) FP = Floating Post Top * all solutions external driver	N = None (125°) T3 = T4 T4 = T4 T5 = T5 Z = Zorya Bulb	Blank = None SP27 = 120-277V 10kV SP48 = 480V 10kV

HILUMZ USA

1335 Ridgeland Parkway
Suite 150
Alpharetta, GA 30004

sales@hilumzusa.com
678-867-9200
hilumzusa.com

COMMON APPLICATIONS

The DC Barrell Mini Light System is a terrific solution for a variety of applications. With over six years of installations and upgraded technology, the system is proven in dozens of interior & exterior applications. HiLumz can customize installation systems, lumen packages and CCT to ensure optimal light performance, aesthetics, install efficiency, and serviceability.



GENERAL USE KITS

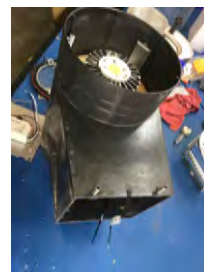
- Garage lights
- Canopy Lights
- Wall Sconces (Up/Down)
- Bollards
- Wall Systems
- Inground Lights



Wall System



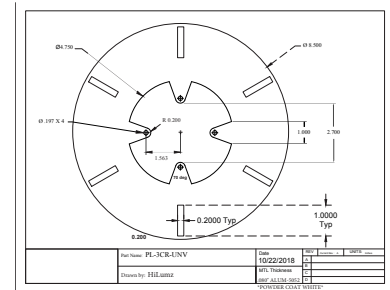
Garage Canopy Light



Up/Down Wall Sconce

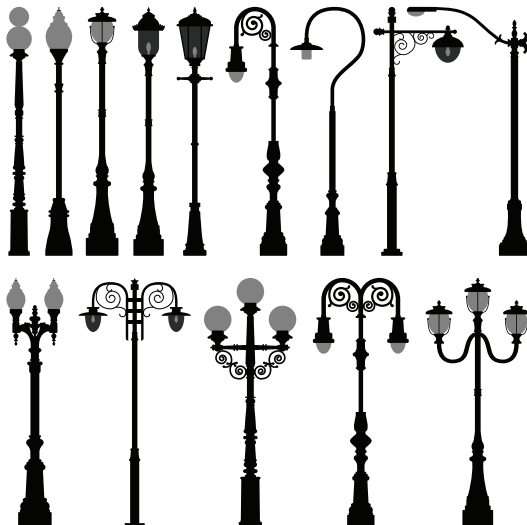


Inground Light



Universal or Custom Plate Systems

DECORATIVE POST TOPS



- Brand Agnostic
- Universal Plates
- Custom Plates
- Finial Mount
- Floating Post Top



Plate Mount Custom fit to fixture Hat



Finial Mount with wire harness (driver in base of light)



Floating Post Top Base Mount with Downward facing lighting



APPLICATION

RETROFITTING

- Low Bay / High Bay
- Accent Lighting
- Wall Washing
- High Ceiling Troffers (car dealerships)
- Slot Fixtures
- High Output T5 Retro
- Vapor Tights / Tunnels / Parking Garages
- High output troffers

OVER 175+ LUMENS / WATT DELIVERED
EASY PLUG & PLAY ATTACHMENTS
OPTIONAL DAMP CHANNEL
INTEGRATED HEAT SINK
ISO 9001 GEORGIA BASED FACILITY



optional



THREE HO T5'S REPLACED BY A SINGLE 44" DYNASTRIP® (>12,000 LUMENS)

FEATURES

QUALITY LIGHTING

- Operating Temperature: -40° F to 135° F (57° C)
- Flicker-free, hum-free, buzz-free
- 170+ (up to 190) Lumens/Watt via under-driven Lumiled 2835C SMDs
- Programmable from 9 to 190 Watts
- L70 over 120,000 hours

DIMMING AND CONTROLS CAPABILITY

- Integrated wireless or wired controls
- 3000K to 5000K; color changing systems available
- 0-10v constant curve; Triac (line voltage) available with select wattages

EASE OF USE

- Daisy chained boards installed bumper to bumper or in 2x4/8 grid
- Designed for install & service ease
- Plug & play TEK-screwin kits



PERFORMANCE SPECIFICATIONS

Model	Wattage	Lumens @ 5000K	CCT	CRI	Voltage
HDS	20	3,460	2200K to 5000K Dual Color Available with App or Switch Based Bluetooth Controls	80+ Standard 90+, 95+ Available	27: 110 to 277 VAC 48: 200 to 480 VAC
	40	6,920			
	60	10,380			
	80	13,840			
	100	17,300			
	120	20,760			
	150	25,950			
	180	31,140			
	200	34,600			

- Efficiency and lumens may vary by 5% based on Current density (length of strips / watt)
- Custom Lengths/Power/Color/CRI Available Upon Request
- L70 > 120,000 @ 350mA & 80°C
- Beam Angle: 95°
- Driver: 0-10V, Constant Dimming
- Operating Temp: -40° F to +135° F (57° C)

DIMENSIONS (LENGTH X WIDTH X HEIGHT)

2' Strips: 21.5" x 0.88" x 0.55"

4' Strips: 44.0" x 0.88" x 0.55"

ORDERING

EXAMPLE HDS-88-120-5070-S: Two, four-foot strips at 5000K, 70+CRI, powered at 120 Watts in standard channel

PRODUCT	LENGTH	WATTAGE	COLOR/CRI	MOUNT
HDS	2x22 = 2 feet 1x44 = 4 feet 2x44 = 8 feet (two 44's) 4x44 = 16 feet (four 44's) "XX" = custom	60 80 100 120 150 180 200	3080 4080 5080 CC = CCT Tuning*	S (Standard open LEDs in heat sink channel) C (IP65 enclosed channel)

* Call HiLumz to specify CCTs & controls

HILUMZ USA

1335 Ridgeland Parkway
 Suite 150
 Alpharetta, GA 30004

sales@hilumzusa.com
 678-867-9200
 hilumzusa.com

Linear LED upgrade solution for facilities with class 2 DC wiring



APPLICATION

RETROFITTING FACILITIES WITH EXISTING DC WIRING INFRASTRUCTURE

- Low Bay / High Bay
- Accent Lighting
- Wall Washing
- Troffers
- Slot Fixtures
- High Output T5 Retro
- Vapor Tights

OVER 175+ LUMENS / WATT DELIVERED
EASY PLUG & PLAY ATTACHMENTS
INTEGRATED HEAT SINK
ISO 9001 GEORGIA BASED FACILITY



FEATURES

QUALITY LIGHTING

- Operating Temperature: -40° F to 135° F (57° C)
- Flicker-free, hum-free, buzz-free
- 170+ (up to 190) Lumens/Watt via under-driven Lumiled 2835C SMDs
- L70 over 120,000 hours

EASE OF USE

- Designed for install & service ease
- Plug & play TEK-screwin kits
- Install hardware included in kit

INPUT DC RANGE

- Range of DC input range of 40VDC to 56VDC.



PERFORMANCE SPECIFICATIONS

Model		# of Drivers	Wattage	Lumens @ 5000K	CRI	Voltage Input
HDS-DCI	1x22	1	17	2,888	80+	40 to 56 DC Voltage
	2x22	1	36	5,891		
	1x44	1	17	2,888		
		1	36	5,891		
		1	49	7,623		
	2x44	1	36	5,891		
		1	49	7,854		
		2	97	15,708		
	3x44	1	49	7,854		
		3	109	17,672		
		3	146	23,562		

- Efficiency and lumens may vary by 5% based on CCT & general variance
- L70 > 120,000 @ 350mA & 80°C
- Beam Angle: 95°
- Operating Temp: -40° F to +135° F (57° C)
- Separate DC to DC Driver to be installed based on the needs of fixture.

DIMENSIONS (LENGTH x WIDTH x HEIGHT)
 22 Strip: 21.5" x 0.88" x 0.55"
 44 Strip: 44.0" x 0.88" x 0.55"
 DC Driver: 1.2" x 0.8" x 0.5"

ORDERING

EXAMPLE HDS-DCI-1x44-1-36-D: Two, four-foot strips at 5000K, 70+CRI, powered at 120 Watts in standard channel

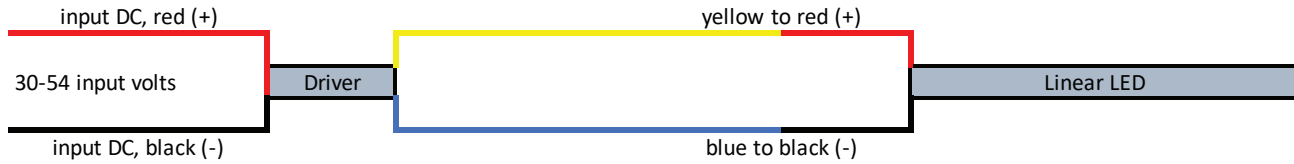
PRODUCT	LENGTH	# OF DRIVERS	WATTAGE	CCT/CRI	DIFFUSOR
HDS-DCI	1x22 = (1) 22" inches 2x22 = (2) 22" inches 1x44 = (1) 44" inches 2x44 = (2) 44" inches 3x44 = (3) 44" inches	1 2 3	17 36 49 97 109 146	4080 5080	D = Diffusor Cover N = No Diffusor Cover

Full integrated fixture solutions are available upon request and may include linear low bays, wall systems, high bays and vapor tights.

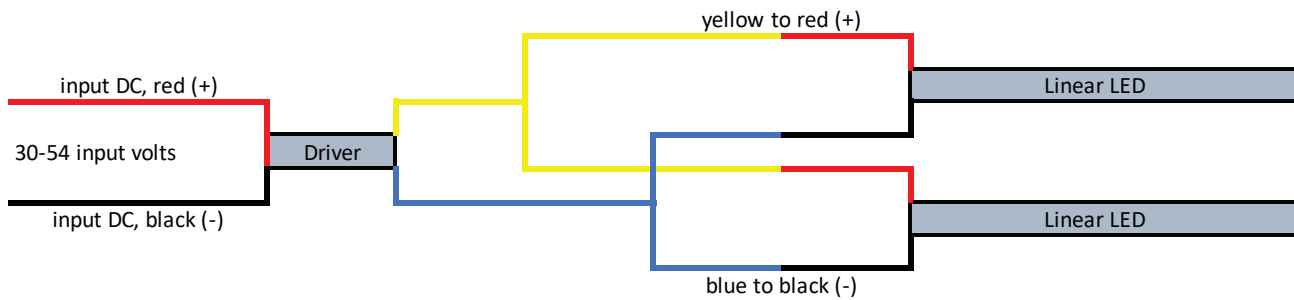
For a complete fixture solution, please contact HiLumz USA to discuss the application.

INSTALLATION & WIRE DIAGRAM

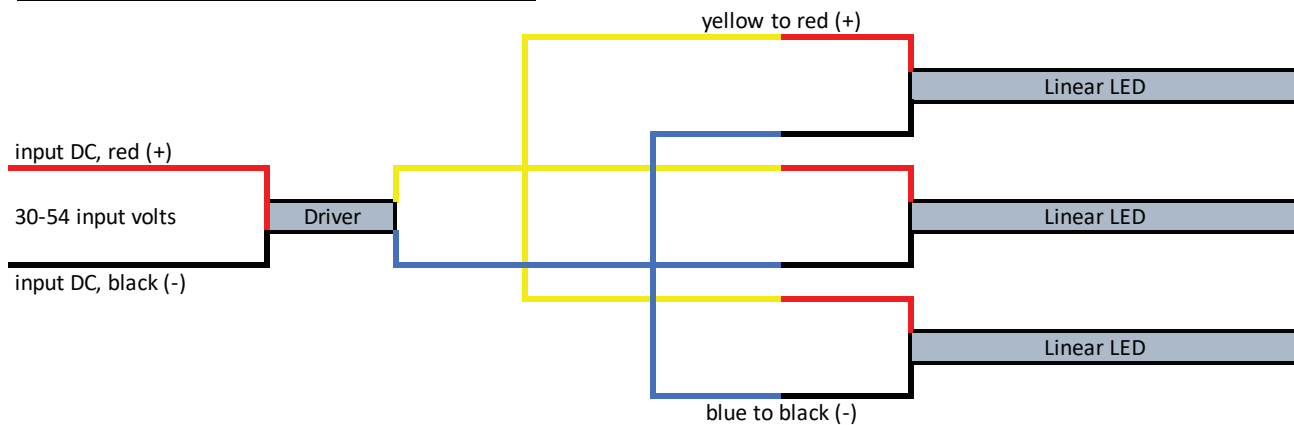
ONE DRIVER TO ONE LIGHT BAR



ONE DRIVER TO TWO LIGHT BARS



ONE DRIVER TO THREE LIGHT BARS



Light bars are fastened by screw fasteners.

All wiring and hardware is included in the kit.

In some cases, depending on where the installer mounts the driver, additional wiring material may be needed.

HILUMZ USA

1335 Ridgeland Parkway
Suite 150
Alpharetta, GA 30004

sales@hilumzusa.com
678-867-9200
hilumzusa.com

OVERVIEW

- ✓ **Power & Elegance**
- ✓ **High Quality Troffer and Industrial Applications**
- ✓ **Up to 1,400 Lumens per foot**

Buzz-free, hum-free, clean and consistent light with industry leading life to troffers, linear low or high bay fixtures. Offered with the industry's highest quality drivers.

FEATURES

FULLY CUSTOMIZED SOLUTIONS FOR EACH PROJECT

- Programmable to any length and light output
- Delivered in pre-packaged, pre-programmed kits

COMPLETE DIMMING AND CONTROLS CAPABILITY

- Aux output for pre-provisioned integrated wireless or wired controls
- 0-10v and Triac (line voltage) dimming options

SMOOTH, CONSISTENT, EFFICIENT LIGHTING

- Daisy chained boards installed with less than 0.5" gap to avoid any breaks in light
- Flicker-free, hum-free, buzz-free
- 155+ Lumens/Watt

UP TO 40 FEET OF LIGHT FROM A SINGLE DRIVER

- Fewer drivers for better control, easy install and minimal maintenance

INDUSTRY-LEADING DURABILITY

- Samsung LM561C LED's rated for over 150,000 hours of operation
- Over and under current protection circuitry

APPLICATION

RETROFITTING

- Troffer, High/Low Bay, Accent Lighting, Wall Washing, Downlight, Slot Fixtures
- Replaces Standard or High Output T5, T8, T12
- Pixel Free Snap-on Diffusor
- Daisy chained up to 32'



PERFORMANCE SPECIFICATIONS

Name	Size	Wattage	Lumens	Lumens, delivered through lens	CRI	Voltage
S22	1x4 2x2	20	3000K: 3,240 (162 Lm/W) 4/5000K: 3,440 (172 Lm/W)	3000K: 2,760 (138 Lm/W) 4/5000K: 2,920 (146 Lm/W)	80+ 90+ optional	120-277VAC
S44	2x4 1x8	25	3000K: 4,050 (162 Lm/W) 4/5000K: 4,315 (172 Lm/W)	3000K: 3,452 (138 Lm/W) 4/5000K: 3,668 (146 Lm/W)		
		41	3000K: 6,520 (159 Lm/W) 4/5000K: 6,930 (169 Lm/W)	3000K: 5,544 (135 Lm/W) 4/5000K: 5,892 (143 Lm/W)		
		60	3000K: 9,540 (154 Lm/W) 4/5000K: 9,840 (164 Lm/W)	3000K: 8,040 (134 Lm/W) 4/5000K: 8,520 (142 Lm/W)		
		80	3000K: 12,000 (150 Lm/W) 4/5000K: 12,880 (161 Lm/W)	3000K: 10,480 (131 Lm/W) 4/5000K: 11,120 (139 Lm/W)		
	2x8 1x16	80	3000K: 12,240 (153 Lm/W) 4/5000K: 13,120 (164 Lm/W)	3000K: 10,640 (133 Lm/W) 4/5000K: 11,200 (140 Lm/W)		

- Custom Lengths/Power/Color/CRI Available Upon Request
- L70 > 1000,000 @ 150mA & 80°C
- Beam Angle: 120°
- Pixel Free Diffusor Available
- Driver: 0-10V, Triac, 12VDC Aux Output
- Operating Temp: -20°C to +50°C

DIMENSIONS

S22: 22"(L) x 0.75"(W)
S44: 44"(L) x 0.75"(W)

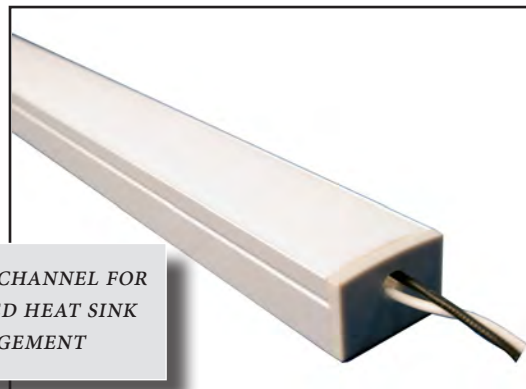
ORDERING

EXAMPLE **S44-4080-402-A-P**: Two, four-foot strips at 4000K, 83+CRI with no diffusor cover

Product	Color/CRI	Wattage	Qty of Strips	Mount	Diffusor	Battery Backup
S22 (22")	3080	20	1	A (adhesive back)	P (no diffusor)	Blank (none)
S44 (44")	3580	25	2	C (aluminum channel)	D (diffusor)	BBU (Battery backup)
	4080	41	3			
	5080	60	4			
		80	8			

HILUMZ USA

1335 Ridgeland Parkway
Suite 150
Alpharetta, GA 30004
sales@hilumzusa.com
678-867-9200
hilumzusa.com

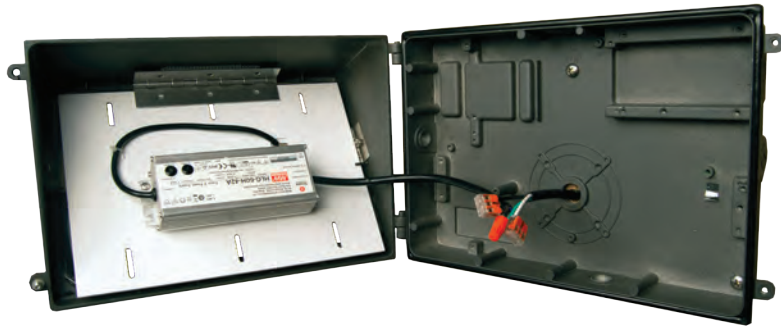


ALUMINUM CHANNEL FOR
INTEGRATED HEAT SINK
MANAGEMENT

OVERVIEW

30W- replace 150 to 175W
60W - replace 250W

Never struggle with replacing wallpacks again. Long lasting, plug & play installation to turn any medium or large wall pack to a high power LED system.



FEATURES

- 130+ Lumens/Watt out of fixture
- 0-10V dimming
- <10 minute install
- >25 minutes to replace fixture
- 3000K, 4000K, 5000K
- Excellent thermals


Fast Delivery
Made in America

APPLICATION

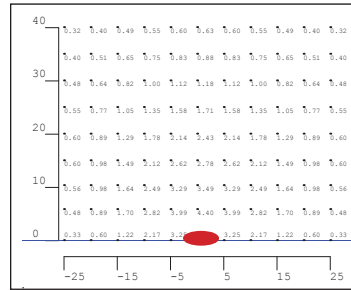
- Mounting uniquely designed by HiLumz Engineers for light performance.
- Piano hinge attached using 3M adhesive above diffuser to let gravity swing the light unit at a downward angle facing the ground.
- Positioning of LED and white plate pushes light out of diffuser with optometry consistent with wall pack original design.



PERFORMANCE SPECIFICATIONS

Product	Wattage	Replaces	Lumens	CRI	Voltage	Dimensions	Op Temp
DWP	30 rated 25 input	75-175W	5000k; 4,100 4000k; 3,900 3000k; 3,600	80+	100-277V	 Length: 11.75" Height: 8.25" Width: 2.0" (including driver)	-40°C +60°C
	60 rated 56 input	175-350W	5000k; 7,400 4000k; 7,200 3000k; 6,600				

* For a 120W LED system to replace 400W Metal Halide, refer to HiLumz DM120.



Photometrics; 60W @ 20ft
Distance in feet
Beam Angle: 113.4° (V) / 92.2° (H)



ORDERING

EXAMPLE **DWP-60-5080-1N-HP-N**: 40 watt wall pack cartridge unit at 5000K, 80 CRI, 120-277VAC input

Product	Wattage	Color	CRI	Voltage	Mounting
DWP	30 60	50 = 5000K 40 = 4000K 30 = 3000K	80	1N = 120-277V 2N = 480V	HP - Hinge Plate

DLC Naming:

30 Watt: DC30-5080

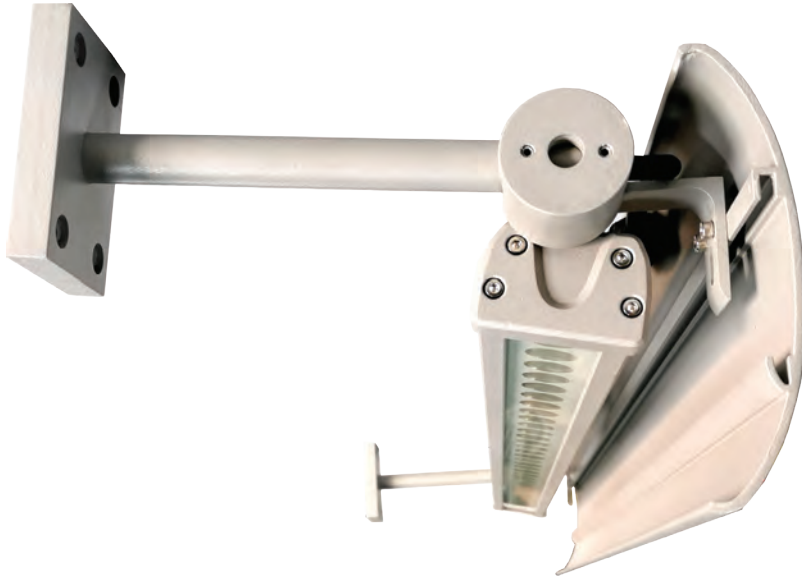
60 Watt: DWP-60-5080-HP

HILUMZ USA

1335 Ridgeland Parkway
Suite 150
Alpharetta, GA 30004

sales@hilumzusa.com
678-867-9200
hilumzusa.com

OVERVIEW



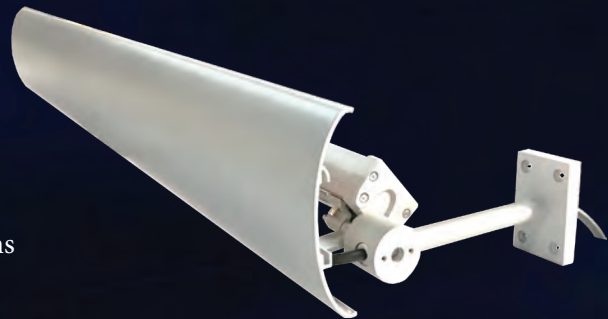
IP 67 Tough Waterproof
3000 to 6500 Lumen Packages
120-277VAC input

An excellent linear wall washer with an attractive decorative shield to hide the light source and improve aesthetics. Tremendous flexibility for on-site adjustments to capture up light or down light. Comes in a range of optic and lumen packages.



EXCELLENCE

- >Ra80
- Flicker-free, hum-free, buzz-free
- 20° to 110° beam pattern
- Rated at -25°C to 55°C
- A true IP67 waterproof module for the toughest conditions

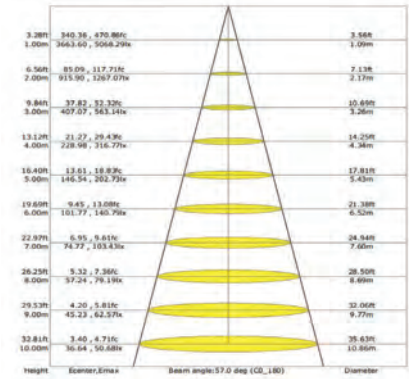
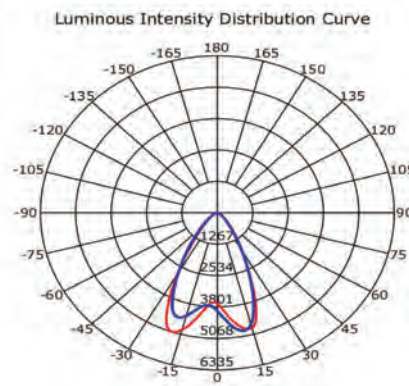


PERFORMANCE SPECIFICATIONS

Product	Wattage	Lumens	Color	CRI	Input Voltage
HLWF	48 Watts	5100	5000K	80+	120 VAC

Other lumen, CCT, and Optical Distributions and Fixture Colors available upon request.

Osram chip-set
Die-casting aluminum material
Surface mount install kit included
Powder coated finish
CE/ROHS/CCC
IP67 Weatherproof
-25°C ~ 55°C
43.3" length x 6.3" width x 10.2" height
Field adjustable tilt of light & shield
IES files available
90° optic standard



ORDERING

EXAMPLE **HLWF-1958-48-5080-A-G**:

Product	Wattage	Color/CRI	Input Voltage	Paint Color
HLWF-1958	48	5080	A (120V-277V) B (480V)	G - Gray

Program Contact

Clyde Huffman
502-548-8559
CHuffman@RLCLED.com
Restaraunt Lighting Concepts, LLC

CORRECTIONAL & BEHAVIORAL E LED RETROFIT

4000K DAYTIME; 2700K NIGHT SECURITY LIGHT

60.0%+ ENERGY REDUCTION

95%+ REDUCED MAINTENANCE

BUZZ/HUM FREE

FLICKER FREE

QUICK INSTALL

OVER 200,000 HOUR LIFE



10+ YEAR LIFE - 10 YEAR WARRANTY

DAYTIME COLOR

NIGHTTIME COLOR
LIMIT BLUE FREQUENCY

HILUMZ USA

1335 Ridgeway Pkwy
Suite 150
Alpharetta, GA 30004

Benefits of an LED upgrade are immense. Flickering or buzzing fluorescent light or poorly made LED tubes can cause terrible side effects to individuals with migraines, autism or other heightened sensory concerns.

An upgrade to LED will pay for itself in under 18-months by reducing energy consumption and drastically reducing burdensome lighting maintenance. It is estimated that over 40% of energy in a care facility is consumed by lighting. Additionally, the process of simply changing bulbs in an confinement fixture is a major undertaking.

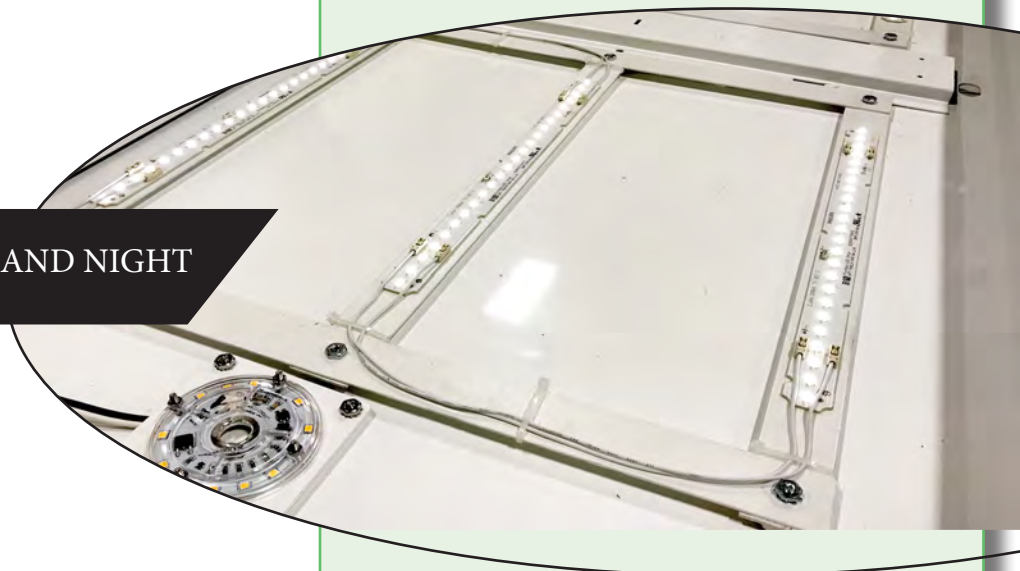


HiLumz USA will provide the perfect LED upgrade system; ensuring the facility's ability to optimize their lighting system to the latest technology, while maintaining existing fixtures and thus avoiding major capital expenditure projects.

T
H
E
S
O
L
U
T
I
O
N

- 1x4 strip kit
- 2x2 strip kit
- 2x4 strip kit
- 1x8 strip kit
- Dual switch control for daylight & nightlight
- Direct driver AC nightlight with no blue waves to promote sleep
- Samsung LEDs
- Eliminate faulty tombstones
- Highest quality Advanced/Osram/ERP Drivers
- Plug & Play Install
- Wireless controls with auto-scheduling

DUAL COLOR OUTPUT FOR DAY AND NIGHT



HILUMZ USA

1335 Ridgeway Pkwy
Suite 150
Alpharetta, GA 30004

40, 75, 100, 120, 150 WATT
DARK SKY AREA LIGHT SYSTEM



MODERN SEAGULL-CURVE DESIGN
UNIFORM LIGHT (3000K, 4000K, 5000K)
FIELD SERVICABLE
HIGH END COMPONENTS
THERMALLY PROVEN



A great light module with excellent thermal management and 4 part stacks of 3030 Lumiled LEDs allowing for large, efficient optics. All units are stocked to accept a photocell and motion controls are available. Built in Alpharetta, GA with local customization to meet any specification, the NightShine Mini is an excellent area light or flood light. The standard stocked black units look great on a black or bronze pole.

- *Rugged and simple "one-person install" system*
- *Excellent maintenance and USA warranty support*
- *Excellent thermal management*



TYPE IV STANDARD FOR LIMITED BACKLIGHT AND FORWARD THROW.
OTHER OPTICS AVAILABLE
BREATHING VALUE FOR HEAT PRESSURE RELEASE.
RELIABLE AND UNIVERSAL



PERFORMANCE

PRODUCT	WATTAGE	REPLACES	LUMENS, 5000K*	VOLTAGE	CRI	OP TEMP
HLAR03	40	100W-250W	5,800	100-277V, 270-480V	74+	-40°C +55°C
	75	250W-350W	10,500			
	100	250W-400W	14,100			
	120	250W-400W	16,560			
	150	400W	20,250			

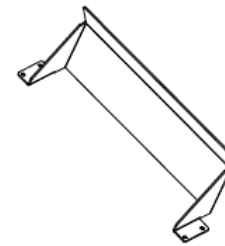
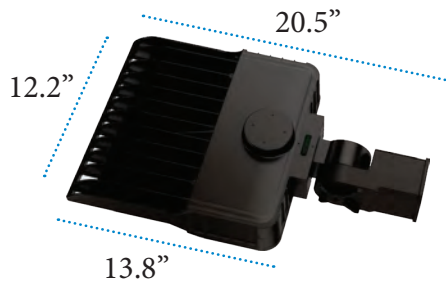
* 5000K LUMEN OUTPUT TIMES 0.97 FACTOR FOR 4000K

* 5000K LUMEN OUTPUT TIME 0.94 FACTOR FOR 3000K

T_{2/3/4/5} OPTICAL DISTRIBUTION
 PHOTOMETRIC SERVICES AVAILABLE

Weight	
Light System	11.5 lbs
/including mount	13.7 lbs

EPA	
Single Head	0.36
Dual Head	0.72
Tri-Head	0.98



SH1 House Shield

ORDERING

EXAMPLE **HLAR03-120-U-40K-4-B-SF**: 120 watt unit, 120-277V at 4000K, with T4 optics and slip fitter mount

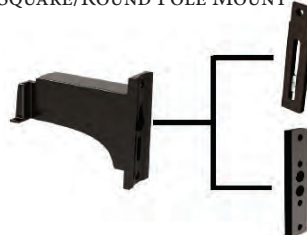
SKU	WATTAGE	VOLTAGE	CCT	OPTICS	FIXTURE COLOR	MOUNTING	CONTROLS	SHIELD
HLAR03	40	U (120-277) H (277-480)	50K 5000K 40K 4000K 30K 3000K	2 T2	B Black D Dark Bronze* W White* * special order	S/RP Pole Mount (square or round) TRU Trunnion SF Slip Fitter	N None P Photocell P2 Smart Photocell M Motion C Surge	SH1 House side SH2 4-side drop
	75			3 T3				
	100			4 T4				
	120			5 T5				
	150							

HiLUMZ USA

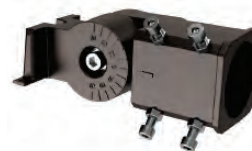
1335 Ridgeland Parkway
 Suite 150
 Alpharetta, GA 30004

sales@hilumzusa.com
 678-867-9200
 HiLumzPRO.com

SQUARE/ROUND POLE MOUNT



SLIP FITTER



TRUNNION





FLORIDA FISH AND WILDLIFE
CERTIFICATION #2022-001



- CREE XLAMP XP-E2 LEDs
- RED TRUE AMBER, N4 SERIES
- FWC APPROVED
- T4 & T5 OPTICAL LENS
- SIMPLE MOUNT OPTIONS

BUILT ON THE WELL-ESTABLISHED
HILUMZ NIGHTSHINE MINI PLATFORM

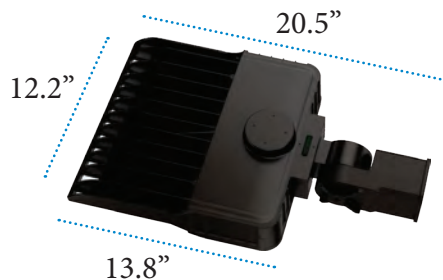
SPECIFICATIONS

PRODUCT	WATTAGE	LUMENS	VOLTAGE	CRI	OP TEMP
HLAR03-A	60	2,600	120-277V, 277-480V	74+	-40°C +55°C



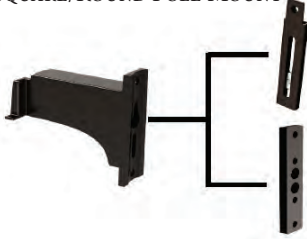
Weight	
Light System	11.5 lbs
/including mount	13.7 lbs

EPA	
Single Head	0.36
Dual Head	0.72
Tri-Head	0.98

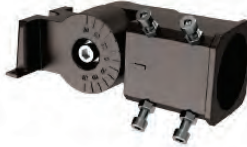


MOUNTING

SQUARE/ROUND POLE MOUNT



SLIP FITTER

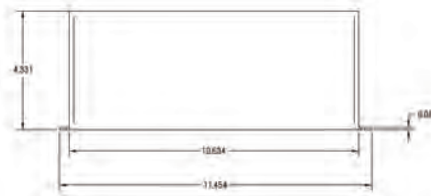


TRUNNION

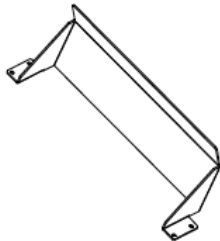


SHIELD

SH2 4-Side Shield



SH1 House Shield




3", 4-sided drop shield is required to meet all three qualifications for Wildlife Lighting Certificate

ORDERING

EXAMPLE **HLAR03-A-60-U-4-B-SF**: 60 watt unit, 120-277V at True Amber Color, with T4 optics and slip fitter mount

SKU	WATTAGE	VOLTAGE	OPTICS	FIXTURE COLOR	MOUNTING	CONTROLS	SHIELD
HLAR03-A	60	U (120-277) H (277-480)	4 T4 5 T5	B Black * special order	S/RP Pole Mount (square or round) TRU Trunnion SF Slip Fitter	N None P Photocell P2 Smart Photocell M Motion C Surge	SH1 House side SH2 4-side drop SH3 Side shield CSTM Custom

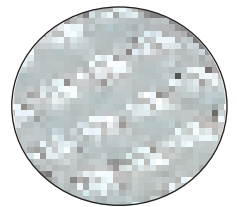


MODERN SEAGULL-CURVE DESIGN
UNIFORM LIGHT
FIELD SERVICEABLE
HIGH END COMPONENTS
THERMALLY PROVEN



At over 16 lbs (@120, 150, 200 Watt), the non-recycled heavy aluminum architectural grade NightShine II provides presence and elegance. Assembled and serviced in UL facility based in Alpharetta, Georgia using a modular design that offers best-practice servicing of LED fixtures; including a spacious driver box, quick connect wiring and plug & play field changeable light modules.

- *Rugged and simple “one-person install” system*
- *Superior footcandles uniformity*
- *Excellent thermal management*



TYPE II, III, IV, V
PHOTOCELL
MOTION/PIR SENSOR
IP66 FIXTURE
IP67 LIGHT MODULE
10KV SURGE
LUMILEDS 3030 CHIPS
BREATHING VALVE FOR
CHANGING HEAT CONDITIONS



PERFORMANCE

Product	Wattage	Replaces	Lumens*	Voltage, Driver	CRI	Op Temp
HLAR04	120	250-400W	5000k; 16,300 4000k; 15,400	100-277V, Sosen-120V-54B 277-480V, Inventronics ESD-150S350DT	74+	-40°C +55°C
	150	400W-600W	5000k; 20,100 4000k; 19,700	100-277V, Sosen SS-150V-54B 277-480V, Inventronics ESD-150S350DT		
	200	600W-750W	5000k; 27,300 4000k; 26,700	100-277V, Sosen SS-200V-54B 277-480V, Inventronics 240S660DT		
	240	750W-1000W	5000k; 32,400 4000k; 31,700	100-277V, Sosen SS-240V-54B 277-480V, Inventronics 240S660DT		
	320	1000W-1200W	5000k; 43,500 4000k; 42,200	100-277V, Sosen SS-320V-54B 277-480V, Inventronics 320S660DT		

* 3000k and 2700k available as special order

ORDERING

EXAMPLE **HLAR04-120-U-40K-5-D-SF**: 120 watt unit on a 120-277V line at 4000K, with T5 optics and slip fitter mount

Product	Wattage	Voltage	CCT	Optics	Fixture Color	Mounting	Controls
HLAR04	120	U (120-277)	50K 5000K	2 T2*	D Dark Bronze	TRU Trunnion	Blank None
	150	H (277-480)	40K 4000K	3 T3	W White*	SF Slip Fitter	P Photocell
	200		30K 3000K*	4 T4*	B Black*	SP Pole Mount (square)	P2 Smart Photocell
	240		27K 2700K*	5 T5		RP Pole Mount (round)	M PIR Motion
	320						C Surge

- * Special Order
- Back & side shields available upon request

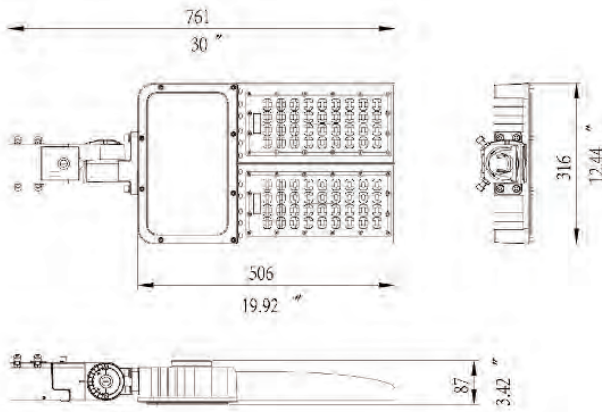
HiLUMZ USA

1335 Ridgeland Parkway
 Suite 150
 Alpharetta, GA 30004

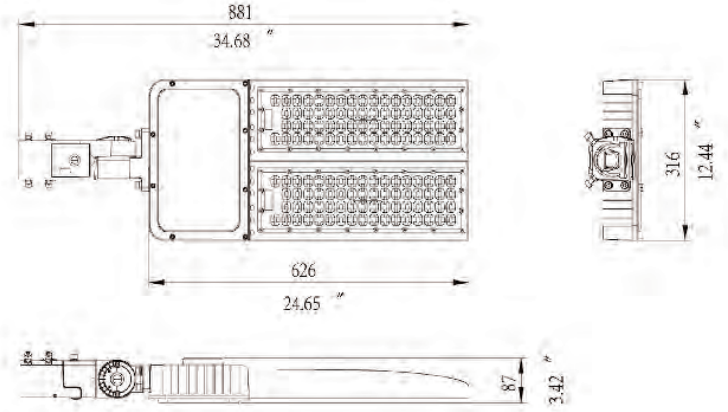
sales@hilumzusa.com
 678-867-9200
 HiLumzPRO.com

DIMENSIONS & WEIGHT

120, 150, & 200 Watt Unit

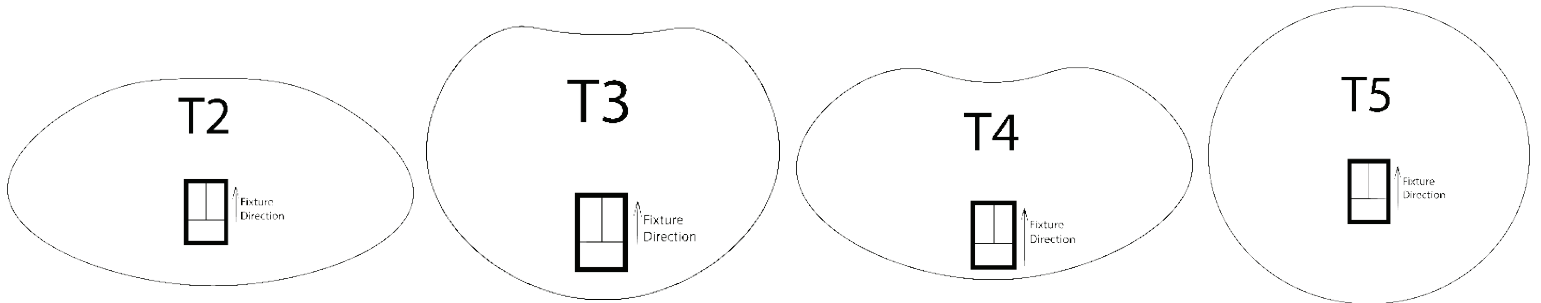


240 & 320 Watt Unit



	120-200 Watt	240-320 Watt
Net Weight	16.7 lbs	20.0 lbs
Gross Weight (with mount)	20.0 lbs	23.3 lbs
EPA Rating	0.47	0.54
Product Dimensions (with slip fitter mount)	29.9 x 12.4 x 3.4 (in)	34.7 x 12.4 x 3.4 (in)
Carton Dimensions	29.1 x 14.5 x 84 (in)	33.8 x 14.5 x 8.4 (in)

OPTICAL DISTRIBUTION



LEFT & RIGHT THROW

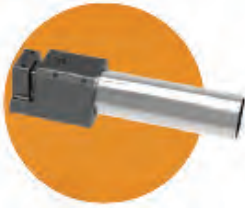
FORWARD FAR THROW
LIMITED BACKLIGHT

FORWARD & WIDE THROW
LIMITED BACKLIGHT

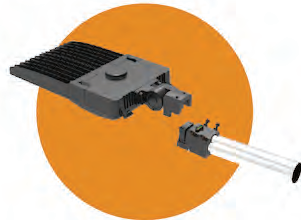
ALL DIRECTION THROW

PHOTOMETRIC SERVICES AVAILABLE

MOUNTING







Step 1:
Install Selected Mount

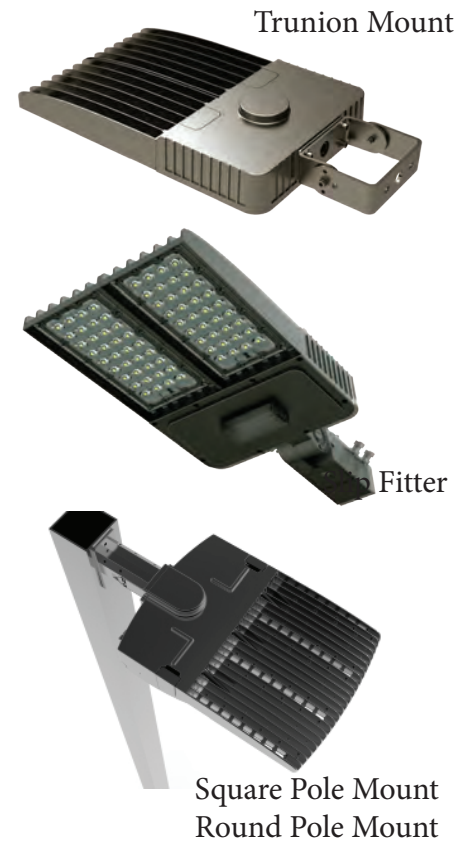


Step 2:
Attach Fixture



Step 3:
Wire to A/C using wire box
Secure mount with bolts

Application	Mount	Image	Mount Name Code
Wall or Ceiling	Trunion Mount		TRU
Bull Horn, Pole Top	Slip Fitter		SFA (2 3/8" tenon) SFB (1 2/5" tenon) SFD (3.0" tenon)
Square Pole Side Mount	Square Pole		SP
Round Pole Side Mount	Round Pole		RP



CONTROLS

Application	Description	
On/Off Photocell	P	Dust and Dawn Sensor for on/off
Virtual Midnight Smart Night Photocell	P2	Dust/Dawn sensor with timer for ON during business hours and dimming from then until 5am
PIR Motion	M	Bi-level dimming with motion sensor
Custom Controls	Drivers are 0-10V dimming enabled; HiLumz can install and provision any customer preferred control system	

HiLUMZ USA

1335 Ridgeland Parkway
 Suite 150
 Alpharetta, GA 30004

sales@hilumzusa.com
 678-867-9200
 HiLumzPRO.com



Hilumz®

The Professional's LED Choice

HIGH PERFORMANCE LED TENNIS LIGHT SYSTEMS



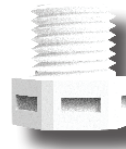
THE NIGHTSHINE GRAND HAS BEEN REVIEWED AND CERTIFIED BY DESIGN LIGHT CONSORTIUM TO MEET THE LATEST LED STANDARDS FOR EFFICIENCY AND PERFORMANCE



DESIGNED TO WITHSTAND WEATHER AND VIBRATION IMPACTS OVER THE LONG HAUL, THE NIGHTSHINE II IS MADE OF SOLID STATE ALUMINUM AND MACHINED PCB BOARDS AND OPTICS.



LUMILED 5050 LEDs WITH A LARGE SURFACE AREA AND EXCELLENT THERMALS ARE DESIGNED WITH L70 LIFETIME HOURS OF OVER 120,000 HOURS (14 YEARS OF CONTINUOUS USE) AND OVER 50,000 HOURS ON THE DRIVER SYSTEMS.



A COMMON FAILURE POINT IN THE DRIVER SYSTEM IS PRESSURE BUILD-UP FROM EXCESSIVE HEAT. THE NIGHTSHINE GRAND BREATHING VALVE DESIGN WILL ENSURE LONGEVITY.



THE NIGHTSHINE II HAS BEEN FULLY CERTIFIED IN AN INDEPENDENT LAB FOR IP67 WATERPROOFING, SAFETY, AND LIFETIME PERFORMANCE. THESE UNITS ARE CERTIFIED FOR INSTALLATION IN THE USA AND CANADA.

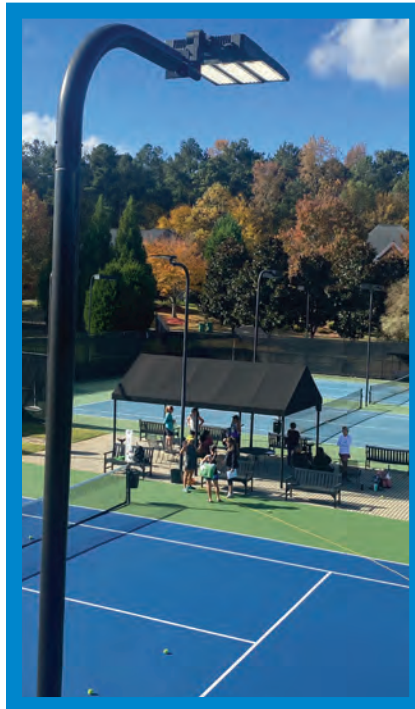


CONTROL SOLUTIONS AVAILABLE, INCLUDING MOTION SENSORS, PHOTOCELLS, AND WIRELESS CONTROLS TO ALLOW FOR ADDITIONAL ENERGY REDUCTION, SOFTER NEIGHBORHOOD LIGHT FOR UNUSED COURTS, AND CUSTOM LIGHT LEVELS FOR VARIOUS PLAY.

FOCUS ON LIGHT QUALITY

THESE LIGHTS WILL BE PLAYED UNDER FOR 20 YEARS, OR MORE...

High quality tennis court lighting makes the *game more accessible*. For many, playing court sports at night is not enjoyable and causes *extreme eyestrain* due to inadequate lighting and intense shadowing. By age 50 the average person has lost 50% of the function of the eye's rods, which allow for the perception of motion. The result is many elderly avoid night time tennis and pickle ball altogether. With modern high output and flicker free lighting technology, accessibility has drastically increased.



HiLumz solutions are specifically designed for optical court performance where high visibility and tight min/max surface lumens are required. Each court is individually analyzed using advanced computer modeling to ensure adherence to the highest standards and the protocols of USTA & IES. It's all made possible with precision engineered optics and large 5050 LEDs that deliver asymmetrical light distribution and transmittance up to 96.5%. There is no guess work involved. Our clients see the results before making a buying decision.

RECOMMENDED PHOTOMETRIC PERFORMANCE STANDARDS

Standard	Description	Footcandle Avg/Min	Min/Max
Class I	Professional, College	125/100 fc	1.5:1
Class II	College, Competitive Clubs	75/60 fc	1.7:1
Class III	Club, High School, Instructional	50/40 fc	2.0:1
Class IV	Parks & Recreational	30/20 fc	2.5:1



PRODUCT PERFORMANCE

CAREFULLY ENGINEERED AND PURPOSE BUILT FOR LONG LIFE,
SPORT-BASED LIGHT PERFORMANCE.

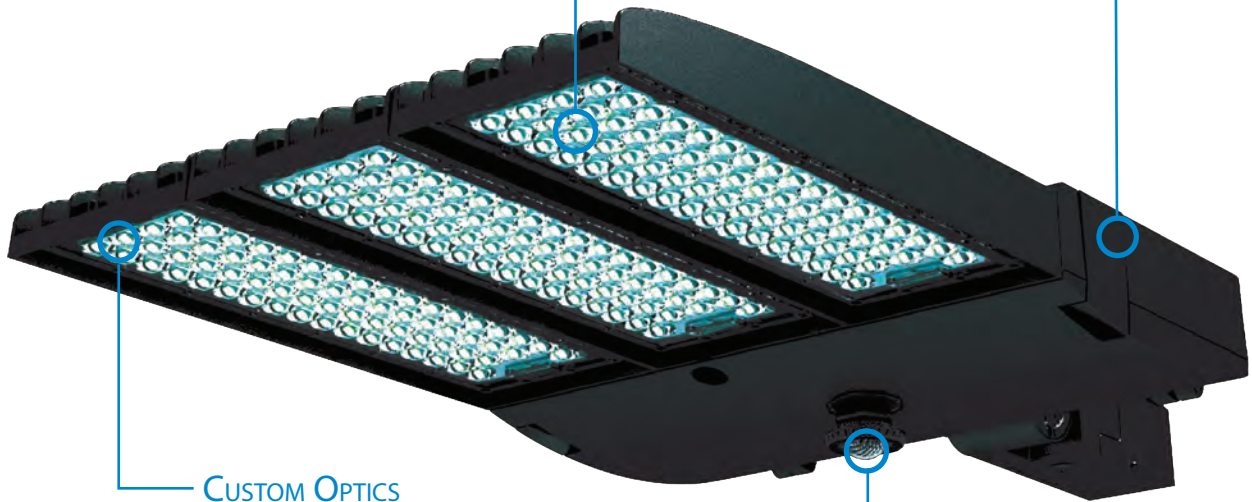
QUALITY COMPONENTS

5050 CHIP SET WITH LARGE OPTIC PACKAGE FOR SUPERIOR LIGHT DISTRIBUTION AND 80+ CRI COLOR CLARITY



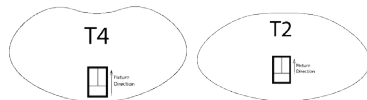
SERVICEABLE

TOOLESS ENTRY DRIVER BOX AND QUICK CONNECT WIRING FOR EASY DRIVER MAINTENANCE



CUSTOM OPTICS

TYPE 4 WIDE CUSTOM OPTICS OR TYPE 2 TO OPTIMIZE FORWARD AND HORIZONTAL LIGHT THROW.



CONTROLS

MOTION SENSOR TO REDUCE LIGHT POLLUTION AND ENERGY CONSUMPTION, WIRELESS CONTROLS AVAILABLE



COST OF OWNERSHIP

ALL THE BENEFITS OF IMPROVED LIGHT FOR PLAYERS
... WITH A POSITIVE FINANCIAL ROI

Metal Halide	NightShine Grand LED	Comment
~40 Lumens/Watt	~140 Lumens/Watt	60+ reduction in energy consumption
3 Year Lamp Life	10+ Year Lamp Life (likely 20)	70%+ maintenance reduction
20 Minute Turn On	Immediate Turn On	Eliminate court downtime during lessons & play



//

IN HIGH-SPEED SPORTS THE VISUAL TARGET (BALL) SHOULD BE OBSERVED AT ITS TRUE SPEED IN ORDER FOR THE PLAYER TO REACT PROPERLY. IF THERE ARE ABRUPT CHANGES IN THE QUANTITY OF ILLUMINATION ON THE PLAYING SURFACE, FAST-MOVING TARGETS CAN APPEAR TO SPEED UP OR SLOW DOWN WHEN PASSING FROM ONE ILLUMINANCE LEVEL TO ANOTHER.

-Illuminating Engineering Society



HIGH PERFORMANCE LED TENNIS LIGHT SYSTEMS

NOTES:

HiLUMZ USA

1335 Ridgeland Parkway
Suite 150
Alpharetta, GA 30004

sales@hilumzusa.com
678-867-9200
HiLumzPRO.com

HIGH PERFORMANCE 40K TO 92K LUMEN SYSTEM



MODERN SEAGULL-CURVE DESIGN
EXCELLENT LIGHT PERFORMANCE
IMMEDIATE ON-OFF/0-10V DIMMING
FIELD SERVICABLE
5050 LUMILED CHIP SET



All of the latest LED technology combined to deliver the highest performance high tennis court lighter on the market. Lumiled 5050 LEDs are the standard in high performing LEDs. The chipset allows for a large and efficient optical package that optimizes light control and distribution. The system is offered with standard 20kV surge and a large body pure aluminum heat management system. The NightShine Grand will provide superior light play for decades to come.

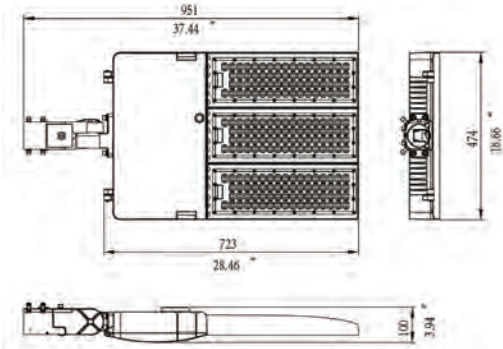
- Full service and full maintenance support
- Rugged and simple “one-person install” system
- Built & supported in the Alpharetta, GA
- Tier 1 performance

TYPE IV WIDE DISTRIBUTION
STANDARD FOR LIMITED
BACKLIGHT AND FORWARD/
WIDE LIGHT THROW.
OTHER OPTICS AVAILABLE
BREATHING VALUE FOR HEAT
PRESSURE RELEASE.



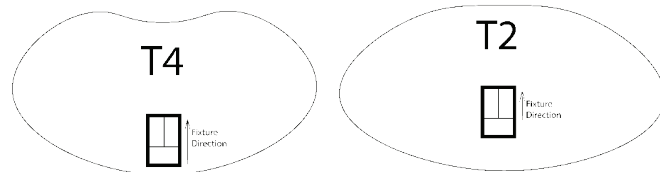
PERFORMANCE

PRODUCT	WATTAGE	LUMENS, 5000K	VOLTAGE	CRI	OP TEMP
AR08	400	58,000	100-277V, 270-480V	74+	-40°C +55°C
	500 (465 measured)	67,500			
	600	83,520			



Net Weight	15.0kg/33.0lb
Gross Weight	18.6kg/37.0lb
EPA	0.6
Dimensions	37.4" * 18.6" * 3.9"

OPTICAL DISTRIBUTION



For roadway, not typically stocked

PHOTOMETRIC SERVICES AVAILABLE
OTHER OPTICS AVAILABLE UPON REQUEST

ORDERING

EXAMPLE AR08-500-1N-57K-T5-SF-N-10 : 500 watt unit on a 120-277V line at 5700K, with T4 optics and slip fitter mount, 10 year warranty

SKU	WATTAGE	VOLTAGE	CCT	OPTICS	MOUNTING	CONTROLS	SHIELDS
AR08	400	1N (120-277)	50K = 5000K	T4 T2	SP Pole Mount (square) RP Pole Mount (round) TRU Trunnion SF Slip Fitter TRU Trunnion	N None D1 Photocell D2 Smart Photocell D4 Motion C1 Custom	BS Back shield* 4S Four side shield* * cost adders
	500	2N (277-480)					
	600						

SQUARE/ROUND POLE MOUNT



SLIP FITTER



TRUNNION



HiLUMZ USA

1335 Ridgeland Parkway
 Suite 150
 Alpharetta, GA 30004

sales@hilumzusa.com
 678-867-9200
 HiLumzPRO.com

References are confidential and should only be used by active prospects.

CROOKED CREEK

14250 Creek Club Dr
Alpharetta, GA 30004



CROOKED CREEK IS AN UPSCALE TENNIS FACILITY. THE TENNIS PROGRAM IS MANAGED BY TENNIS PROFESSIONAL BRAD SCENEY (VIA SCENEY TENNIS).

- Courts: 11
- Lights per court: 6
- Class III
- Won RFP with 6 bidders
- 18 footcandles updated to over 45
- Reference:
 - Teresa Traylor
 - Chairman Tennis Committee
 - mtraylor@me.com

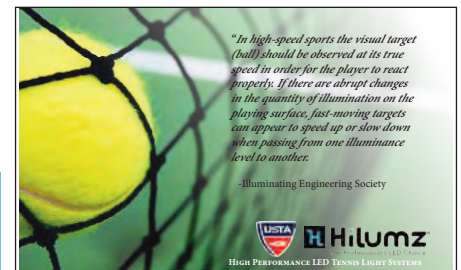


CHATTAHOOCHEE COUNTRY CLUB

3000 Club Dr
Gainesville, GA 30506

LOCATED ON THE WATER AND MARINA OF LAKE LANIER, CHATTAHOOCHEE CC IS A PREMIER PRIVATE TENNIS CLUB.

- Courts: 11
- Lights per court: 6
- Class III
- Won RFP with 4 bidders
- Fast install
- Reference:
 - Scott Gates
 - Head Tennnis Pro
 - sgates@ccclub.cc
 - 678-313-2592



OUR TENNIS COURTS ARE GETTING A LIGHTING UPGRADE!

WHEN

Soon! Installation is scheduled for early Spring. Installation time is approximately one-week. It will have limited impact on court availability as the team will upgrade one set of courts at a time.

WHY

To improve the night time tennis experience.

WHAT TO EXPECT

- US Tennis Association lighting recommended performance for light quality and uniformity
- Reduced eye stress during night play
- Immediate On/Off
- High efficiency LED court lights
- Local support from Hilumz USA



Poster-board we provided for program announcement

COLONIAL COUNTRY CLUB

9181 Independence Way,
Fort Myers, FL 33913

**A PREMIER PRIVATE GOLF, TENNIS
AND CLUB EXPERIENCE IN FT. MYER,
FLORIDA.**



Courts: 8 tennis, 2 pickleball,
1 bocce

Lights per court: 8

Class II/III

One week installation

Reference:

- Jeff Timmer
- Head Tennis Pro
- 239-910-5928



“Lights look great. Best LED lights I have seen on a tennis court. The sleek design and the clean mount make the courts look very modern.”

- Jeff Timmer (head tennis pro)

OTHER

AVONLEIGH COMMUNITY

CHAMPIONS RUN COMMUNITY

STERLING ON THE LAKE

MONCLAIR PICKELBALL COURTS

POLO GOLF AND TENNIS

**WE WILL BE GLAD TO PROVIDE REFERENCES TO ANY OF THESE
UPON REQUEST.**

BUILT TO LAST

LEAN, MODERN DESIGN

LATEST TECHNOLOGY

UNIFORM FOOTCANDLES

PROVEN PERFORMANCE

PATENTED DESIGN

SERVICABLE (TOOL FREE)



EXCELLENCE IN DESIGN

OVERVIEW

Rocket 04 series LED Sports Light is designed for exterior sports lighting. Offering a superior high output system with the latest technology 5050 LEDs, recessed in a precision optic to reduce glare and optimize light control, the Rocket 04 is available in a variety of lumen packages and optical arrays. HiLumz can support your layout with an optimized photometric layout to ensure proper coverage.

Soccer/Football/Lacrosse, Baseball/Softball, Tennis/Pickleball, and General High Mast Flood, and High Ceiling Indoor.

CONSTRUCTION

- Heavy duty cold forged technology with high purity die-cast aluminum housing.
- Light engine is thermally isolated from driver compartment.
- UV stabilized polyester powder paint finish.

OPTICAL / ELECTRICAL

- Industries highest performing LED and optical combination using Lumiled 5050 LEDs
- Optics NEMA 2/3/4/5
- -40° to 50° ambient operating temp range
- 1-10V dimming driver device standard
- 100-277Vac operation 50/60HZ standard, 347V/480V 50/60Hz optional
- Standard 10kA, 20kV surge; 20kA available
- Shield covers to eliminate up-light pollution.

FINISH

Rugged, weather-tight design and 3G vibration ratings ensure durability even in harsh environments.

INSTALLATION

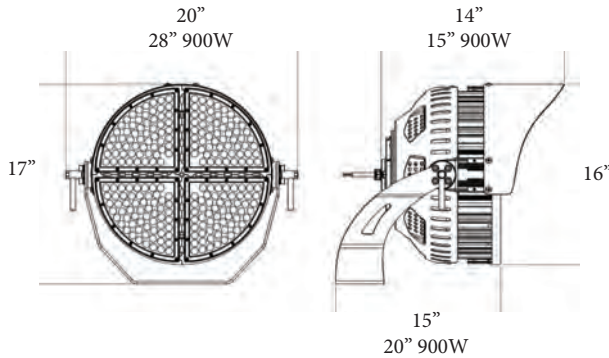
- Four mounting options for any application
- Remote pole based driver box available to reduce weight load, improve thermals, and allow for ease of maintenance.

PERFORMANCE

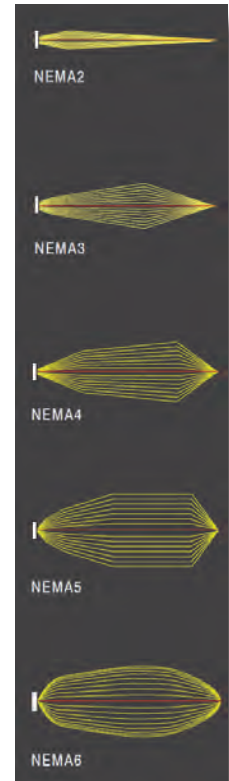
Product	Wattage	Lumens*	Weight	EPA	LEDs/CRI	Voltage
HNSL04	300W	51,000	36.4 lb	1.3	Lumileds 5050 (70 CRI)	100-277V 200-480V
	450W	72,000	37.5 lb	1.3		
	550W	85,000	38.6 lb	1.3		
	750W	102,000	42.0 lb	1.3		
	900W	124,500	60.6 lb	2.6		

* Lumens may vary by distribution type

Other	
CCT	5000K Standard; 4000K, 57000K Available
Power Factor, THD	0.95, <15%
Operating Temperature	-30°C +50°C
IP Rating	IP66, IK10



Distributions



Request IES files or photometric analysis from HiLumz

ORDERING

Example: HNSL04-550W-5K-A-4-T: 550 Watt Rocket Sports Light @ 5000K, universal voltage, type 4 optics & trunion mount

MODEL	WATTAGE	COLOR	INPUT VOLTAGE	OPTICS	MOUNTING	OTHER
HNSL04	300W 450W 550W 750W 900W	5k: 5000K* * Other CCT special order	A: 120-277V B: 277-480V	2 (NEMA2) 3 (NEMA3) 4 (NEMA4) 5 (NEMA5) 6 (NEMA6)	T (Trunion) SP (Slipfitter)	N (None) D1 (20kV Surge) D2 (Aiming Laser)

For sports and entertainment venues, ask about a DMX control integration for pre-set light flashing dynamics



SELF CONTAINED SOLAR POWERED
ROUGH IP64 WATER/BUG PROOF
LFP 32650 3.2V/6000mA BATTERY
MOTION CONTROLLED
SERVICEABLE BATTERY
QUICK INSTALL

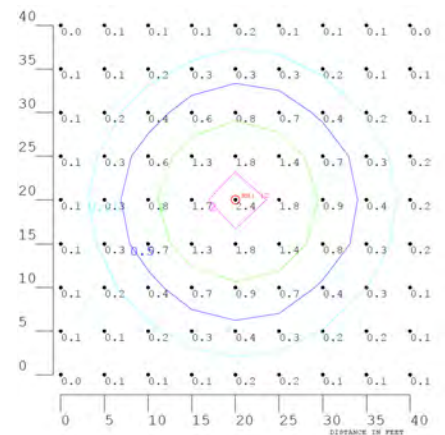


With latest generation chipset and an integrated Lithium battery, the HLSC02 Canopy Light is a simple installation unit that allows for net-zero energy usage and low cost installation where existing power is not available. Using a 3030 Samsung LEDs, the HLSC02 delivers highly efficient lighting. Motion controls keeps light levels turned down to 5% to last 11 hours and jumps to 100% brightness when motion is detected.

- Full service and full maintenance support in Alpharetta, GA
- Rugged and simple system
- LFP 32650 3.2V/6000mA battery and Samsung 3030 LEDs
- Approved for outdoor application

TYPE V WIDE DISTRIBUTION STANDARD FOR 120 DEGREE LIGHT PATTERN

40 FOOT DISTRIBUTION AT 12 FT HEIGHT



HiLUMZ USA

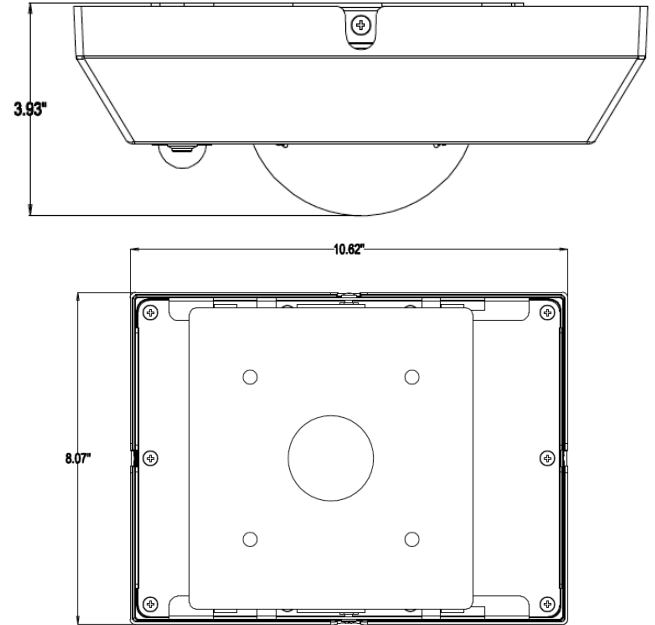
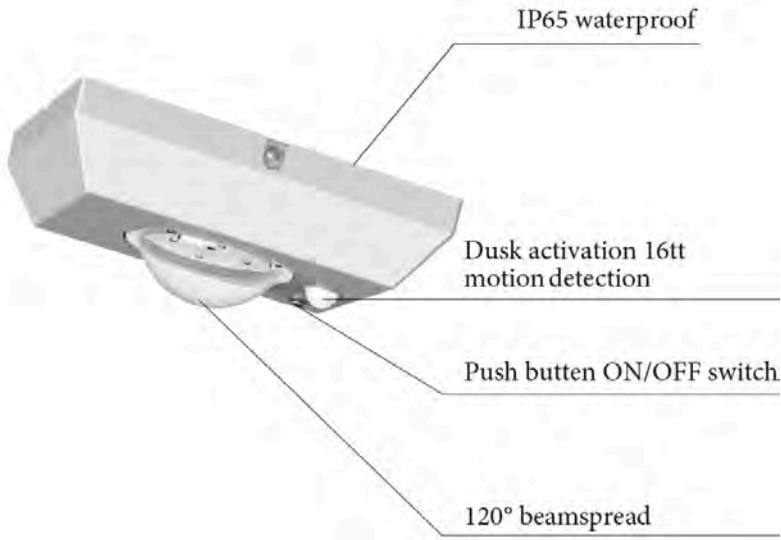
1335 Ridgeland Parkway
Suite 150
Alpharetta, GA 30004

sales@hilumzusa.com
678-867-9200
HiLumzPRO.com

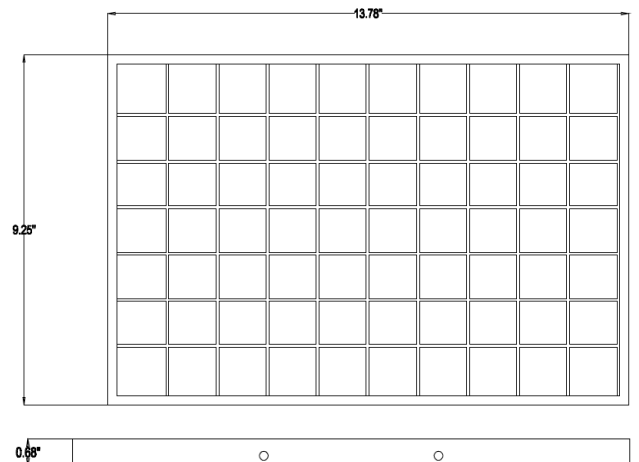
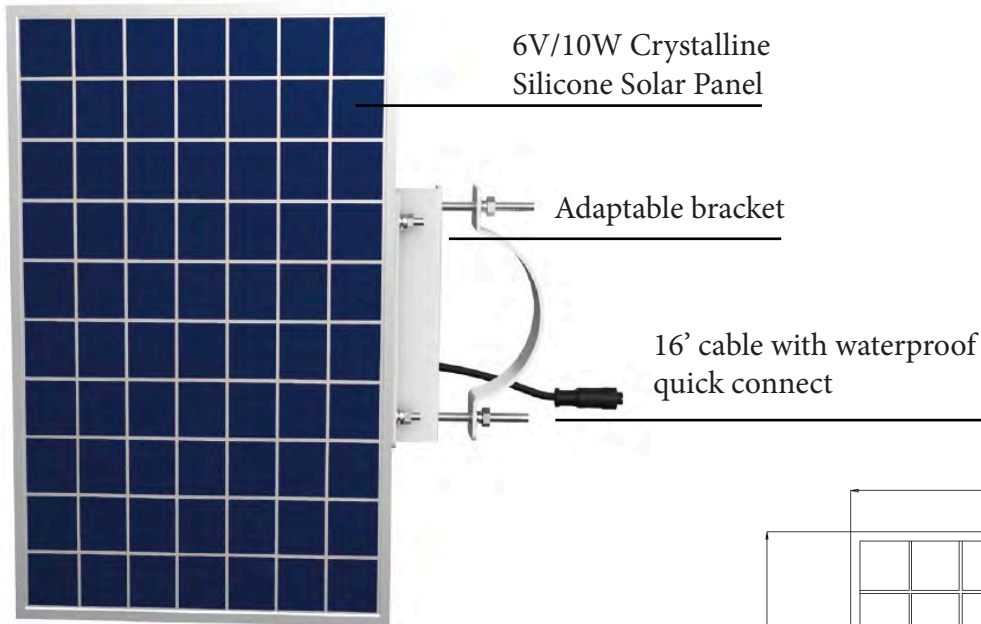
PRODUCT	WATTAGE	L/W	LUMENS, 5000K	VOLTAGE	CRI	OP TEMP
HLSC02	7 Watts	138	~980 at full output	N/A	80+	-10°C +40°C

Ordering SKU: **HLSC02-50k**

LED SYSTEM



SOLAR PANEL



HiLUMZ USA

1335 Ridgeland Parkway
Suite 150
Alpharetta, GA 30004

sales@hilumzusa.com
678-867-9200
HiLumzPRO.com