

The Professional's LED Choice

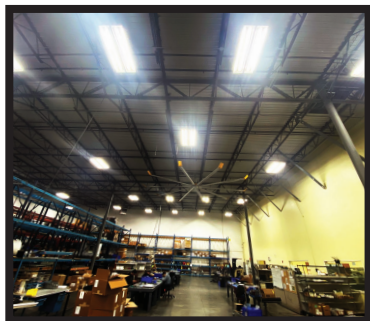
## SOLUTIONS GUIDE

2024 v1.1

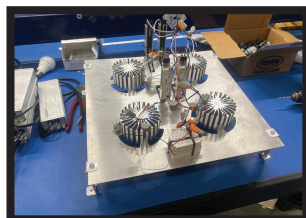
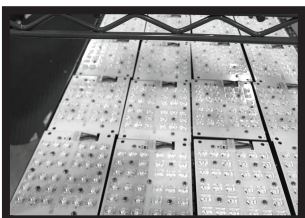
678-867-9200

[sales@hilumzusa.com](mailto:sales@hilumzusa.com)

[hilumzusa.com](http://hilumzusa.com)



Your LED shop!



## HILUMZ USA | THE PROFESSIONAL'S LED CHOICE

**"HiLumz will have a kit for that"**

**Explore our quick-ship products or semi-custom project based solutions**

- ➔ *Engineered product portfolio for JIT production.*
- ➔ *Extensive inventory on-site, ready to ship*
- ➔ *Consultative problem solving approach*
- ➔ *LED product application & control expertise.*
- ➔ *"Easy to do business" culture*

**DOT, Municipalities, Airports, Campus, Industrial, and More**

**Certified Lighting Consultants to Help Guild You**



## A PROVEN PROCESS FOR SUCCESS

## PROJECT IDENTIFICATION

1.

- Project Type: Street/Roadway, Pedestrian, Parking, Wall, Decorative
- Fixture Model Type
- Lumen output, color temperature, voltage

## SOLUTION PROPOSAL

2.

- Solution offering
- Budget Pricing
- Installation expectations

## QUICK TURN "NO RISK" PROTOTYPE

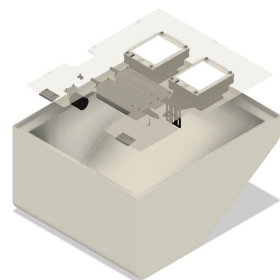
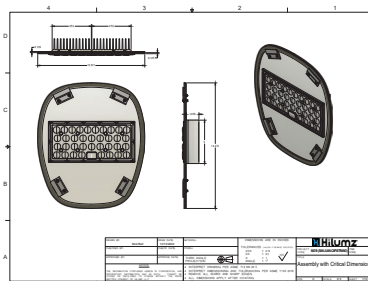
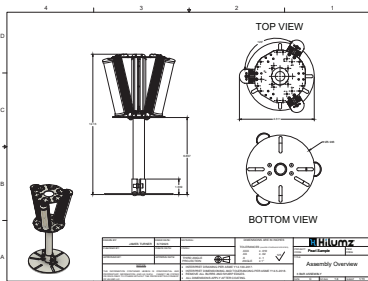
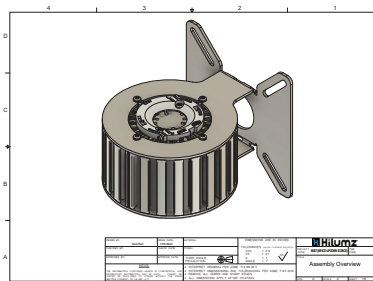
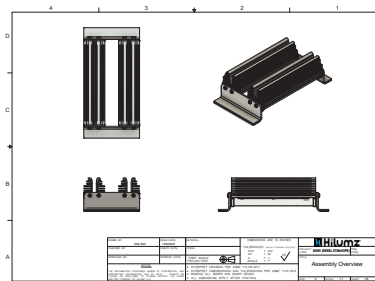
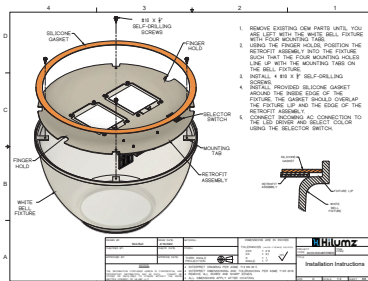
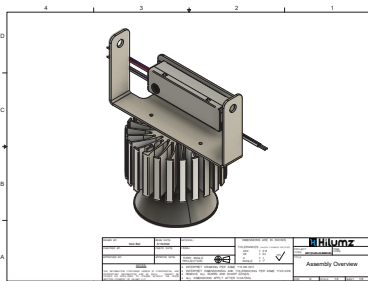
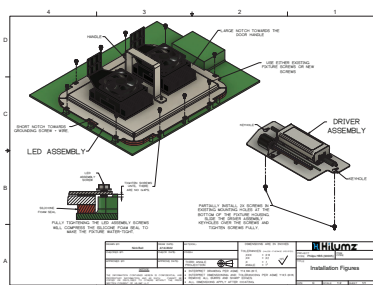
3.

- Installation video
- Photometrics, ROI, Warranty, Complete offering
- Send us a fixture for a perfect fit or we can work off pictures

## FINAL MODIFICATIONS &amp; ORDER DELIVERY

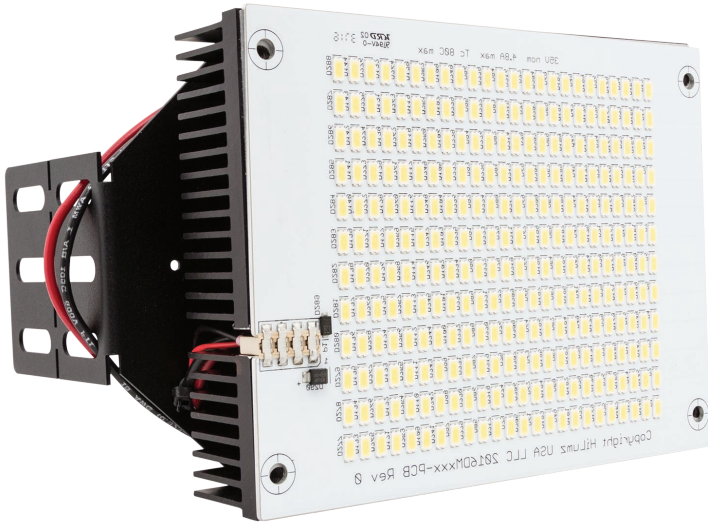
4.

- Engineering work completed, fast production
- Support





## OVERVIEW

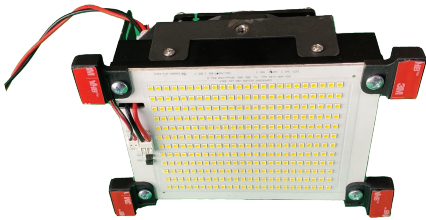


## 250 TO 1,000 WATT REPLACEMENTS 10+ YEARS EXPERIENCE MOST TRUSTED IN INDUSTRY

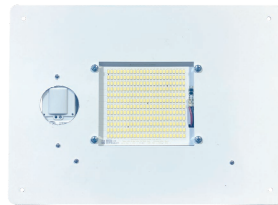
HiLumz continues to be the go-to solutions provider for high output retrofit systems. Designed to replace 250W to 1000W traditional lamps. Samsung 3030 LEDs

## FEATURES

- Excellence in mounting/aesthetics
- 120 to 480VAC input
- 0-10V dimming / Dali
- T3, T5, Narrowing Optics
- 3,000 to 45,000 lumens
- Amber, 30k, 40k, 50k



**Adhesive Mount**  
Universal Fit



**Plate Mount**  
Rectangle/Round/Custom



**Socket Mount**  
Horizontal or Vertical

## ORDERING

EXAMPLE **DM150-5080-1N-V**: 150 Watt unit at 5000K with 120-277V dimmable driver and vertical FlexMount kit

Product	Color / CRI	Driver	Mounting	Optics
DM	DM	1N = non-Dim 120-277v	SOCKET MOUNT	Blank (none)
DM60	5080	1D = 1-10v Dim 120-277v	H = FlexMount, Horizontal Socket	DMZ Only
DM80	4080	2N = 480v non-dimmable	V = FlexMount, Vertical Socket	T3
DM120	3080	2D = 480v dimmable	VS = Vertical Mount E39 Screw In	T5
DM150	Amber		AD = Glass Adhesive Mount	25°
DM240				78°
DM300	DMZ		STOCKED PLATES	Surge
	5070		FR = Plate Round	Blank (none)
DMZ	4070		FS = Plate Rectangle	S277 = 120v-277v 10kV
DMZ150	2770		FRD = Plate Round w/ Driver Mount	S480 = 480v 10kV
DMZ300			FSD = Plate Square w/ Driver Mount	
			CSTM = Custom	





## IP67 WATERPROOF LIGHT MODULES

- Replace existing lens with LED system
- Does not need to be behind glass
- Allows for refurbishing existing LED systems
- Extremely tough with full range of optics



## INDIRECT HIGH OUTPUT

- Natatoriums / Indoor Tennis
- Replacement for 1,000 Watt HID



## INGROUND CONVERSION KIT

- Drop in LED system
- Adjustable brackets

### OVERVIEW



**Garage Canopy, Post Top, Wall Sconces, Bollards, Down-lights, Street Lights, Inground**

**30W- over 4,000 lumens**

**50W - over 6,500 lumens**

Small, powerful LED system that packs a punch. Vast beam control options, line or low voltage dimming, and custom install solutions and support.

### FEATURES

- TRIAC Line Dimming
- 0-10V dimming
- HiLumz mounting expertise
- Full suite of LEDil optics
- Canopies, Streetlights, Wall Systems, Decorative



### OPTICS

T3

Roadways, Post Tops for medium directional



T4

Roadways, Post Tops for wide directional



T5

All directional, wide area lighting



Zorya Bulb

340° bulb effect for all directional light



### ORDERING

EXAMPLE **DC30-4080-F3-T3**: 30 watt unit at 4000K, 80 CRI with FlexMount e39 clamp & T3 optic

Product	Color	CRI	Mounting	Optics	Surge
DC30 DC50	50 = 5000K 40 = 4000K 35 = 3500K 30 = 3000K 27 = 2700K 22 = 2200K	80 90* * Special order	V2 = E26 Vertical Screw In V3 = E39 Vertical Screw In H2 = Custom Bracket Mount H3 = Custom Plate Mount F2 = E26 FlexMount Clamp (non-screw in) F3 = E39 FlexMount Clamp (non-screw in) FP = Floating Post Top  * All solutions external driver	N = None (125°) T3 = T3 T4 = T4 T5 = T5 Z = Zorya Bulb	Blank = None SP27 = 120-277V 10kV SP48 = 480V 10kV



## OVERVIEW

**30W- REPLACE 150 TO 175W**  
**60W - REPLACE 250W**

Never struggle with replacing wall packs again. Long lasting, plug & play installation to turn any medium or large wall pack to a high power LED system.

## FEATURES

- 160+ Lumens/Watt out of fixture
- 0-10V dimming
- <10 minute install versus >25 minutes to replace fixture
- 3000K, 4000K, 5000K
- Excellent thermals

## ORDERING

EXAMPLE **DWP-60-5080-1N-HP**: 40 watt wall pack cartridge unit at 5000K, 80 CRI, 120-277VAC input

Product	Wattage	Color	CRI	Voltage	Mounting
DWP	30 60	50 = 5000K 40 = 4000K 30 = 3000K	80	1N = 120-277V 2N = 480V	HP - Hinge Plate





## OVERVIEW

**3,000 to 15,000 Lumen System**  
**Decorative & Industrial**  
**Replace up to 400W MH**

Pre-designed kits for popular post tops



GRANVILLE® GE TORCH® TUDOR®  
 MANCHESTER® WASHINGTON® RENAISSANCE®  
 ARLINGTON® HALLBROOK®



BOTTOM UP MOUNT

TOP DOWN MOUNT



## FEATURES

- Socket mount or direct mount
- 480VAC available
- Experienced conversion kits for all major brands
- 0-10V dimming / Dali
- HiLumz mounting expertise
- House-Side / Street-Side directional
- 3,000 to 15,000 lumens
- Amber, 22k, 27k, 30k, 35k, 40k, 50k

## ORDERING

EXAMPLE **HLPTK-50-U-40K-SM-T-PT1-SP**: 50 watt unit at 4000K, 80 CRI with Bottom Up Plate Mount, 360°, 10kV Surge

Product	Wattage	Input Voltage	Color/CCT	Directional Lighting	Light Angle
HLPTK	30 50 60 90 120	U = 100-277VAC H = 480VAC	50K = 5000K 40K = 4000K 35K = 3500K 30K = 3000K 27K = 2700K 22K = 2200K AM = Amber	SM = Symmetric (360°) ASM = Asymmetric (180°)	S = Straight T = Downward Tilt
				Mounting	Controls
				PT1 = Bottom Up Plate BE26 = Bottom Up E26 BE39 = Bottom Up E39 PT2 = Top Down Plate TE26 = Top Down E26 TE39 = Top Down E39 9XXXX = 5-digit Custom Mount CSTM = Custom (contact HiLumz)	PC3 = 3-Pin Photocell PC7 = 7-Pin Photocell D = Dali Enabled PC7D = 7-Pin + Dali
				Surge	
				SP10 = 10kV Surge SP20 = 20kV Surge	

## OVERVIEW

## IP 54

## 820 to 5600 Lumen Packages

## Remote or Integrated 120V-277V Driver

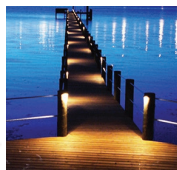
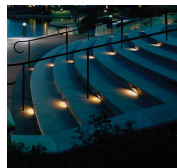
The Tough Bar low power LED module is a fantastic fit for any application requiring high quality light and long life in tough and tight conditions.

## FEATURES

- Excellent light module adaptable to hundreds of applications using HiLumz customized mounting solutions.
- Multiple modules available in a single application
- >Ra80
- Flicker-free, hum-free, buzz-free
- 110° beam pattern
- Rated at -25°C to 85°C
- IP54 Light Module with IP66 wire connections & driver system
- Protective covering to prevent dust and physical damage to LED module

## RETROFITTING

- Wall Sconces
- Bollards
- Decorative
- Step Lighting
- Exterior Accent Lighting
- Docks/Marinas
- Endless Applications



## ORDERING

EXAMPLE **TB02-12-3080-A-RA**: 12 Watt Tough Bar Module at 3000K with remote driver and adhesive back

Product	Wattage	Color/CRI	Voltage	Mounting
TB02	6 12 20 25* 40* 60**	Amber 2280 2780 3080 3580 4080 5080	A (120-270V)	RB - Remote driver; bracket attachment RA - Remote driver; adhesive attachment IB - Integrated driver; bracket attachment IA - Integrated driver; adhesive attachment  Standard unit is screw attached. We also provide adhesive and magnet attachment options. Please contact a HiLumz sales associate to discuss.

\* Two light bar configuration

\*\* Three light bar configuration

## OVERVIEW



**12,000 LUMENS FROM SINGLE 4' STRIP**  
**OVER 175+ LUMENS / WATT DELIVERED**  
**EASY PLUG & PLAY ATTACHMENTS**  
**OPTIONAL DAMP CHANNEL**  
**INTEGRATED HEAT SINK**

With integrated heatsink and high output metal core LED board, the Dynastrip is designed for excellent heat management with the industry's highest lumen output.

## FEATURES

### RETROFITTING

- Low Bay / High Bay
- Accent Lighting
- Wall Washing
- High Ceiling Troffers (car dealerships)
- Slot Fixtures
- High Output T5 Retro
- Vapor Tights / Tunnels / Parking Garages
- High output troffers



- Operating Temperature: -40° F to 135° F (57° C)
- Flicker-free, hum-free, buzz-free
- 175+ (up to 190) Lumens/Watt via under-driven Lumiled 2835C SMDs
- Programmable from 9 to 190 Watts
- L70 over 120,000 hours
- Integrated wireless or wired controls
- 3000K to 5000K; color changing systems available
- 0-10v constant curve; Triac (line voltage) available with select wattages
- Daisy chained boards installed bumper to bumper or in 2x4/8 grid
- Designed for install & service ease
- Plug & play TEK-screwin kits
- Available with DC power converter for DC powered facilities

## ORDERING

**EXAMPLE HDS-88-120-5070-S:** Two, four-foot strips at 5000K, 85+CRI, powered at 120 Watts in standard channel

PRODUCT	LENGTH	WATTAGE	COLOR/CRI	MOUNT
HDS	2x22 = 2 feet 1x44 = 4 feet 2x44 = 8 feet (two 44's) 4x44 = 16 feet (four 44's) "XX" = custom	60 80 100 120 150 180 200	3080 4080 5080	S (Standard open LEDs in heat sink channel) C (IP65 enclosed channel)

**Ask about our linear LED upgrade solution for facilities with class 2 DC wiring**



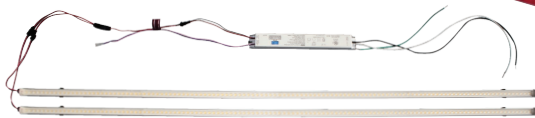
## OVERVIEW

**THE MOST RELIABLE, EASY TO INSTALL TROFFER SOLUTION**  
**CCT & WATTAGE ADJUSTABLE**  
**160 LUMENS/WATT**  
**MAGNETIC APPLICATION OF STRIPS AND DRIVER**  
**INTEGRATED HEAT SINK**  
**LOW GLARE**

Installation is a breeze. HiLumz RipStrips provide excellent light for troffers and lowbays in a highly economical package. No more bypassing ballasts, rewiring or replacing faulty tombstones. Ripstrips are direct A/C power to a driver and direct connection to strips, eliminating any failure point.

## FEATURES

- Faster install than ballast bypass tubes
- Magnetic backed strips and driver; driver needs a single tek screw
- Quick connect plug and play
- CRI >83 for interior color clarity
- Flicker-free, hum-free, buzz-free
- Available in variety of wattages for various application heights
- Standard 0-10V control enabled dimming
- Overpopulated LED board, 126 LED's per 4' strip
- Eliminates failure points from the system; ballasts, tombstones



WATTAGE ADJUSTABLE TOGGLE



## ORDERING

**EXAMPLE HRS2-24-ADJ:** Two four foot strips with 24/30/40 adjustable driver with no controls

Product	Size	Wattage	Packaging
HRS2	14 (1x4: 1, 4' strip) 22 (2x2: 2, 2' strips) 24 (2x4: 2, 4' strips) 44 (4x4, 4, 4' strips)	20 (20 watt for 1x4 & 2x2 kit) ADJ (24, 30, 40 watt selectable) 60 (for 44 kit)	B - Bulk K - Individual Kit

ALL STRIPS ARE 3500K, 4000K, 5000K SELECTABLE



## OVERVIEW

**Replaces up to 500 Watt Quartz, Par 46, Par 56**

**30W- over 4,600 lumens**

**50W - up to 6,500 lumens**

Small, powerful LED system that packs a punch. With vast beam control options, line or low voltage dimming, and custom install solutions and support.

## FEATURES

- TRIAC (Forward-Phase) and ELV (Reverse-Phase) line dimming available
- 0-10V dimming with 1 to 100% dimming available
- HiLumz mounting expertise
- Full suite of LEDil optics



optics



trim kits



For best results, installing the driver external of the can is recommended. In some applications with larger cans and air control, the driver can be installed on the light engine.

## ORDERING

**EXAMPLE DC30-4080-1T-V2-49:** 30 watt unit at 4000K, 80 CRI with vertical screw in to E26 adapter, 49 degree reflector

Product	CCT/CRI	Driver	Mounting	Optics
DC30 DC50	5080 = 5000K 4080 = 4000K 3080 = 3000K 2780 = 2700K 2280 = 2200K DW = Dim to warm (CCT by request)	ID = 120-277V 0-10V 1T = 120-277V Triac LT = Lutron LTEA2W DX = DMX Direct DXR <sup>2</sup> = DMX Remote	V1 = E11 Vertical Screw In V2 = E26 Vertical Screw In V3 = E39 Vertical Screw In H2 = E26 Horizontal H3 = E39 Horizontal 4TM = 4" Can Trim Plate with Spring Locks 6TM = 6" Can Trim Plate with Spring Locks 8TM = 8" Can Trim Plate with Spring Locks PT = Universal Plate CSTM = Custom	N = No Optic (-115°) 16 = 16° reflector 32 = 32° reflector 49 = 49° reflector 65 = 65° reflector 91 = 91° reflector



### Eliptipar® LED Conversion Kit

- Numerous Configurations
- Line Voltage Dimming



### Linear Cove Lighting

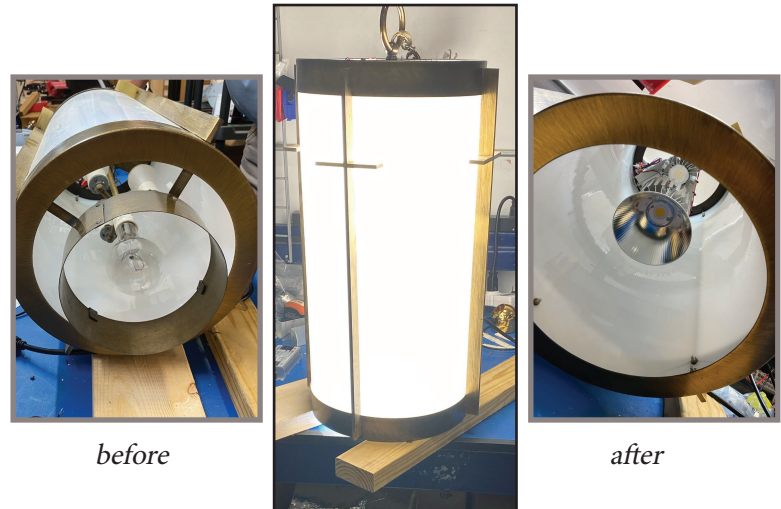
- Programmable lumens / foot
- Line Voltage Dimming
- Long runs on Single Driver



*Image of LED Kit  
Wireless Controls*

### Chandelier LED Conversion Kit

- Up/Down Lighting
- Pop-In Linear Kit
- Line Voltage, 0-10V, DMX, Wireless, Triac Dimming



*before*

*after*

### Decorative Pendant LED Kit

- Separate Controls for Globe Light and Downlight Intensity
- Line Voltage, 0-10V, DMX, Wireless, Triac Dimming



## Ask about poles & photometric for full project quote



### OVERVIEW

#### Terrific Area Light Built to Specification Full Mounting Solutions Premium Electronics

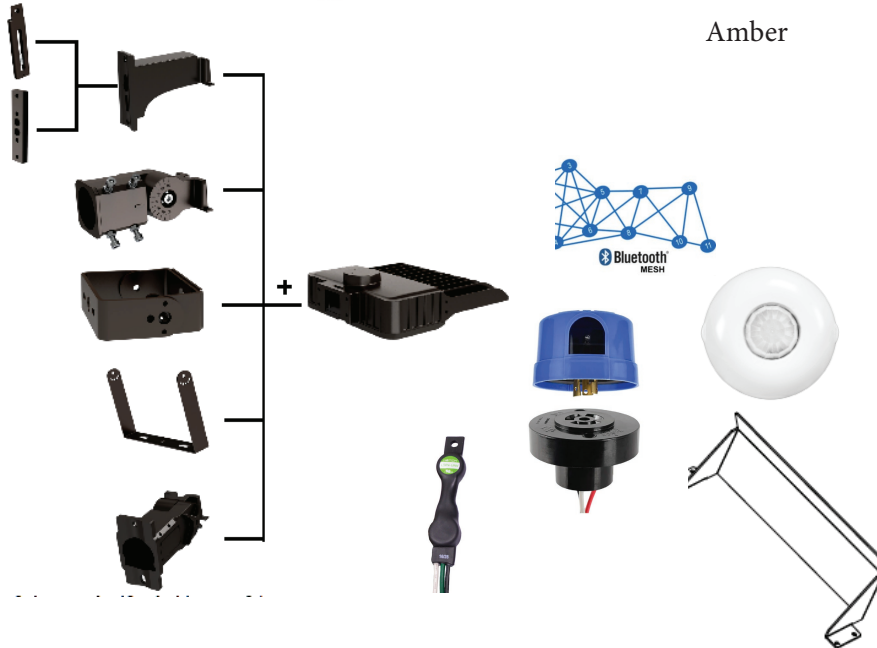
The HiLumz Mini and Mini+ area light is a great all around light system that covers 175W to 1000W equivalent HID light performance with a modern seagull-curve design. Excellent thermals and field serviceability make the Mini a product that can be installed with confidence.



Amber

### FEATURES

- Available in Amber, 3000k, 4000k, 5000k
- 120 to 480VAC input
- >Ra80
- 90,000 L70
- Serviceable driver and surge protection
- T2, T3, T4, T5 optical options
- Simple “one-person install” system
- Integration of controls of your choice



### ORDERING

EXAMPLE **HLAR03-120-U-40K-4-B-SF**: 120 watt unit, 120-277V at 4000K, with T4 optics and slip fitter mount

SKU	WATTAGE	VOLTAGE	CCT	OPTICS	FIXTURE COLOR	MOUNTING	CONTROLS	SHIELD
HLAR03	40 75 100 120 150 200 240 300	U (120-277) H (277-480)	50K 5000K 40K 4000K 30K 3000K A Amber*	2 T2 3 T3 4 T4 5 T5	D Dark Bronze** B Black W White* Other	S/RP Pole Mount (square or round) TRU Trunnion SF Slip Fitter	N None P Photocell P2 Smart Photocell M Motion C Surge	SH1 House side SH2 4-side drop

\* Available with consultation

\*\* Primary stock, custom paint color available



## NIGHTSHINE GRAND



**70k to 90k Lumens**  
**5050 Chipset**  
**Fantastic Optical Performance**  
**Class III Tennis**  
**10 Year Warranty**  
**Integrated Surge**

## NIGHTSHINE ELITE



**60k Lumens**  
**5050 Chipset**  
**Fantastic Optical Performance**  
**Class IV Tennis**  
**7 Year Warrant**  
**Intregrated Surge**

*Monclair pickleball courts**Colonial Country Club**Hampton Viillage**Grand Cascades**Crooked Creek*

- PHOTOMETRIC SERVICES - POLES - ADAPTERS - FULL SERVICE -





The Professional's LED Choice

678-867-9200

[sales@hilumzusa.com](mailto:sales@hilumzusa.com)



[hilumzusa.com](http://hilumzusa.com)

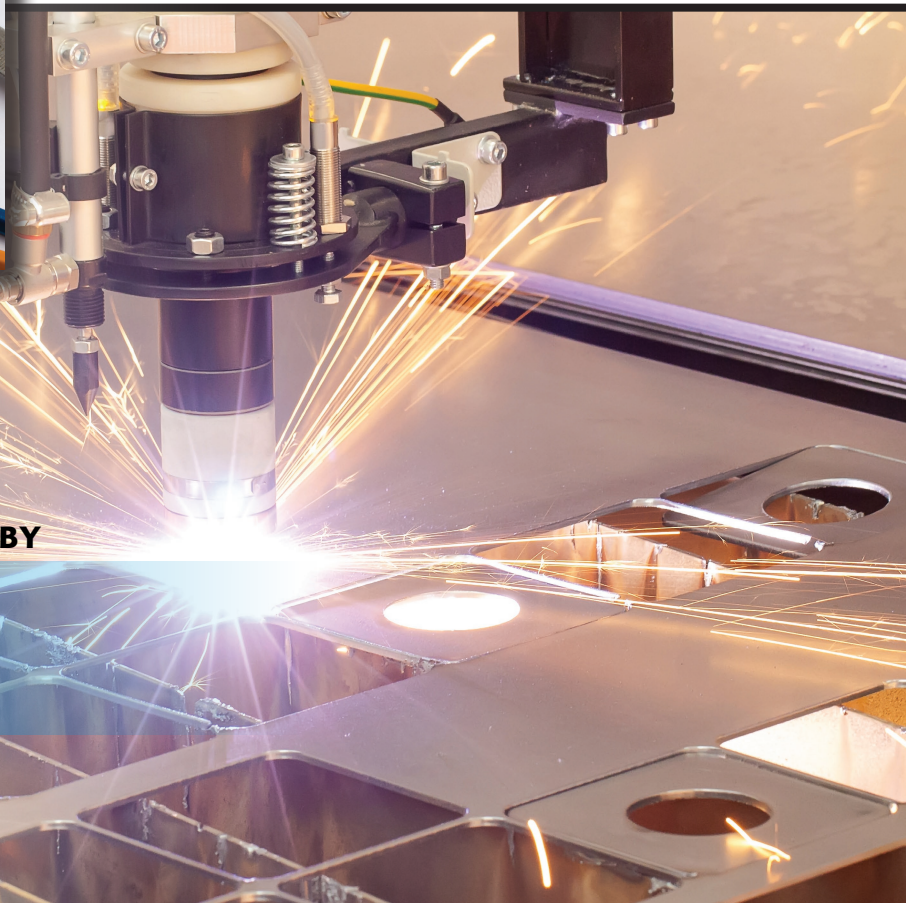
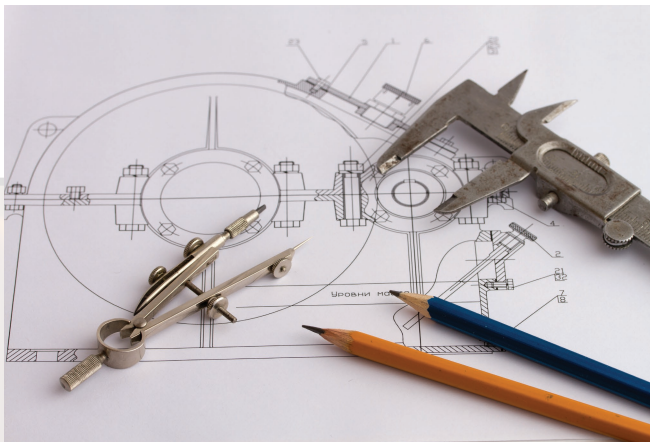
**PROJECT MANAGEMENT**

**MECHANICAL & ELECTRICAL DESIGN**

**ASSEMBLE / BUILD**

**SUPPLY CHAIN EXCELLENCE**

**PHOTOMETRIC ANALYSIS**



**APPLICATION CONSULTANTS STANDING BY**

**Contact:**

1335 Ridgeland Pkwy - Suite 150 - Alpharetta, GA 30004

(678) 867-9200 (press 1 for sales support)

Email: [sales@hilumzusa.com](mailto:sales@hilumzusa.com)